

# 45569 Newby Drive, Chilliwack

\$1,149,900



4 level split FAMILY HOME on sought after NEWBY DRIVE in central SARDIS! Featuring an ultra wide 70' frontage w/ side 88' long RV parking- bring the toys and work trucks! Quiet no thru steet in walking distance to all levels of schools, multiple parks, & 5 minutes to the Vedder River Trails. Main levels w/ dual family rooms, large kitchen, dining area, & access to the outdoor covered patio. Upper level w/ 3 bdrms, master w/ private RENOVATED 3 piece ensuite & walk-in closet. Newer carpets & paint- shows great! Amazing partially finished bsmt w/ rec room, storage, & room for a 4th bdrm! Updated furnace & hot water tank too! LOCATION + SIZE + PARKING = a WIN for you and your family! Floorplan online, come by the open houses!

## KEY INFORMATION

MLS® R2663406

Residential Detached

Chilliwack

4 Bedrooms

3 Bathrooms

2,883 SF

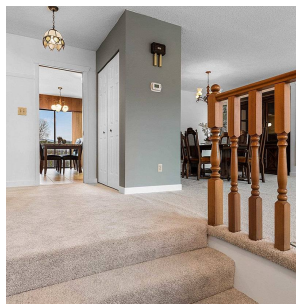
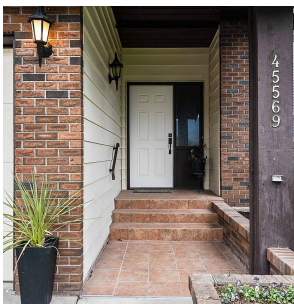
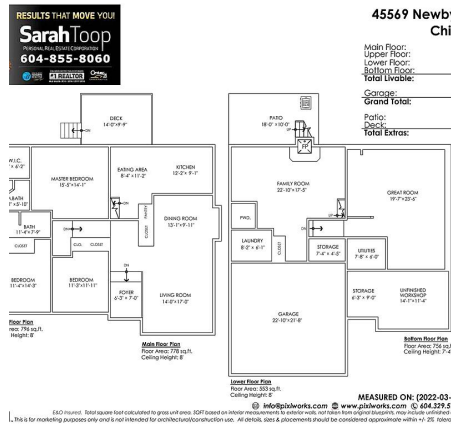
6,970 SF Lot

## FEATURES

Year Built: 1981

Views: Mountains

Listed By: Century 21 Creekside Realty



rennie