

5 44523 McLaren Drive, Chilliwack

\$899,900



Great location ON THE STREET! "Webster Landing" Within seconds to the Rotary Trail & just down the road from Garrison Crossing- Quiet location. Over 2100 sqft 2 storey basement features 3 large bedrooms, 3 baths, vaulted entrance, granite countertops in kitchen & bathrooms, crown moldings, tile flooring, rock faced fireplace, DOUBLE garage, LARGE driveway w/ street access makes it feel like a house not a townhouse and right across the road from Rotary trail access. LIVING ROOM WALL IS NOT A BEARING WALL AND CAN BE REMOVED!! Also has a great size YARD for the the kids and perfect for entertaining & BBQ's. Come and see, you'll like this one! PET & KID FRIENDLY COMPLEX!!!

KEY INFORMATION

MLS® R2663366

Residential Attached

Chilliwack

3 Bedrooms

4 Bathrooms

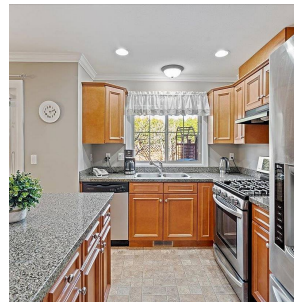
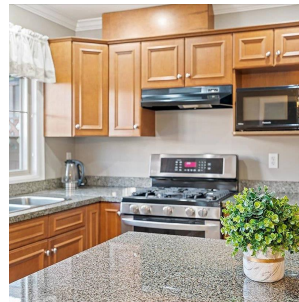
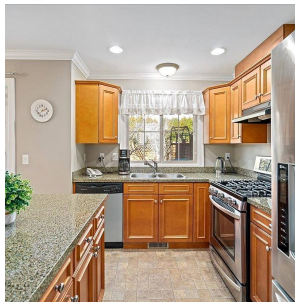
2,095 SF

FEATURES

Year Built: 2006

Views: Mountains

Listed By: HomeLife Advantage Realty Ltd (Vedder)



rennie