

1204 8850 University Crescent, Burnaby

\$828,888



Enjoy soaring unobstructed 270 degree panoramic views of Burrard Inlet, North Shore Mountains, Metrotown, Downtown, and Port Moody, all from your very own pristine, spacious 2 bed, 2 bath corner suite with upgraded flooring, quartz counters, and private oversized balcony. Multi-level amenities include a private gym, yoga room, and roof top garden with barbecue. Live on top of the world in a master-planned community surrounded by nature trails, shopping, groceries, transportation, school and university, all at your doorstep. Includes 1 secure parking and storage.

KEY INFORMATION

MLS® R2662431

Residential Attached

Simon Fraser University

2 Bedrooms

2 Bathrooms

829 SF

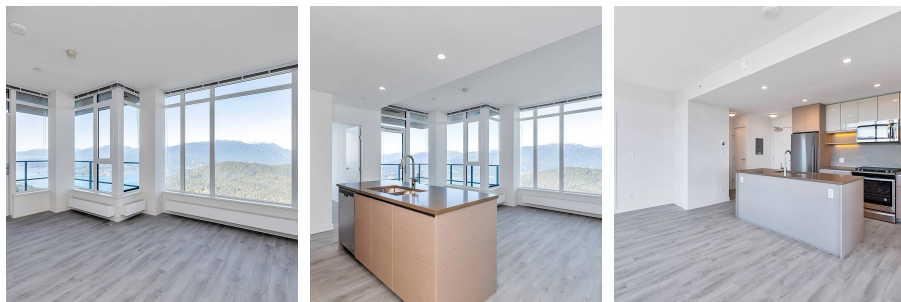
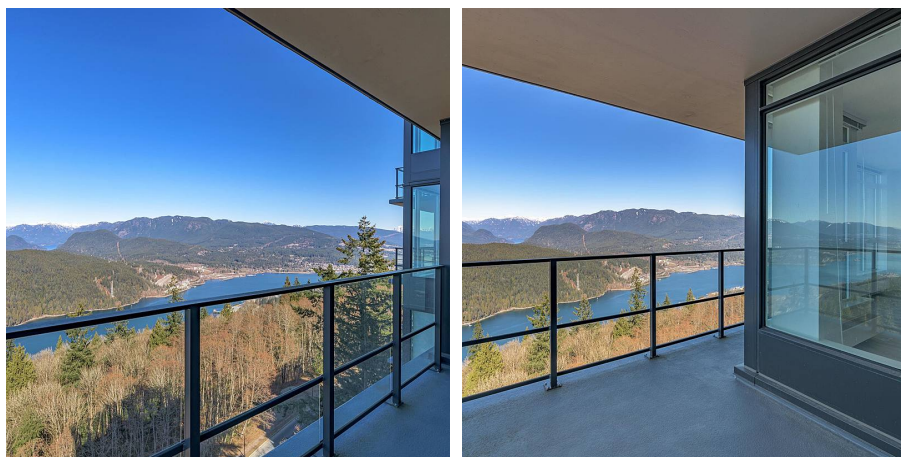
\$488.98 Maintenance Fees

FEATURES

Year Built: 2019

Views: 270 Degree Mountain and Inlet

Listed By: Sutton Group-West Coast Realty (Surrey/24)



rennie