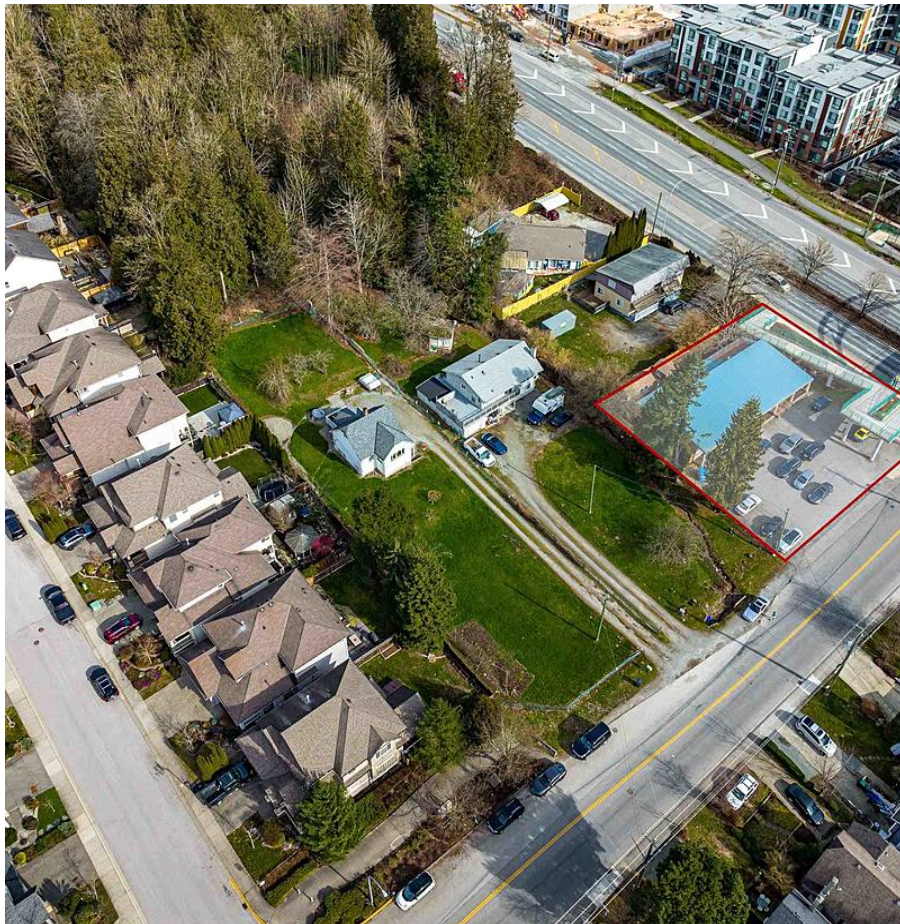


19985 68 Avenue, Langley

\$1,899,000



DEVELOPMENT POTENTIAL! Seller would prefer this property to be purchased with 6825 200th St - R2662469. A great opportunity to purchase TWO side-by-side INFILL LOTS right on the corner of 200th & 68th Ave in the HEART OF LANGLEY! Totalling 24,117.52 SQFT combined, these properties are the perfect investment opportunity for future development. The commercial unit currently generates \$3650 in monthly rental revenue. Neighbouring properties 19957 & 19983 68 Ave are also currently listed. Buyer to confirm all land use with the Township Of Langley. Do not walk on property.

KEY INFORMATION

MLS® R2662890

Residential Detached

Willoughby Heights

0 Bedrooms

3 Bathrooms

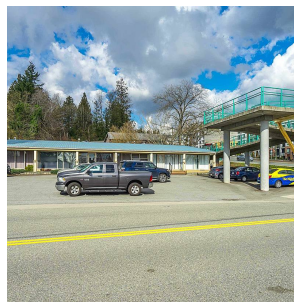
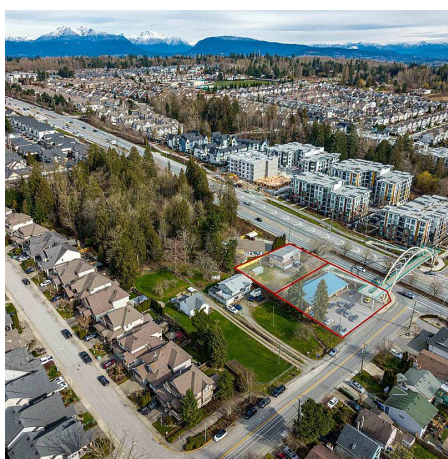
3,675 SF

14,576 SF Lot

FEATURES

Year Built: 1985

Listed By: Royal LePage Northstar Realty (S. Surrey)



rennie