

45 9405 121 Street, Surrey

\$949,000



MEGA CORNER UNIT 3 bedrooms + Den & 3 washrooms. Open concept, spacious living room and family room. Main floor features 9' ceiling crown moulding, convenient powder room, den and laminate floor throughout. Kitchen comes with stainless steel appliances, wood cabinets, granite countertops and sink with garburator. All appliances replaced in January 2022. Top floor features a LARGE MASTER bedroom with walk in closet and an ensuite, two spacious bedrooms (one of them has 9' ceiling) with a common washroom. Tandem Garage(double deep) backing into a private fenced backyard and access to back lane (Central LOCATION!) Two big storage's in the garage. Walking distance to both level of schools, bus stop, skytrain and shopping centre, all amenities. Easy access to highways. RENTALS ALLOWED!!

KEY INFORMATION

MLS® R2664071

Residential Attached

Queen Mary Park

3 Bedrooms

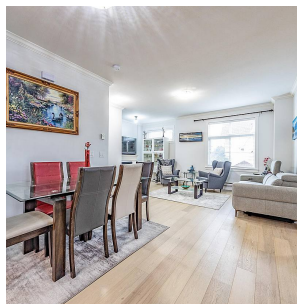
3 Bathrooms

1,802 SF

FEATURES

Year Built: 2011

Listed By: Nationwide Realty Corp.



rennie