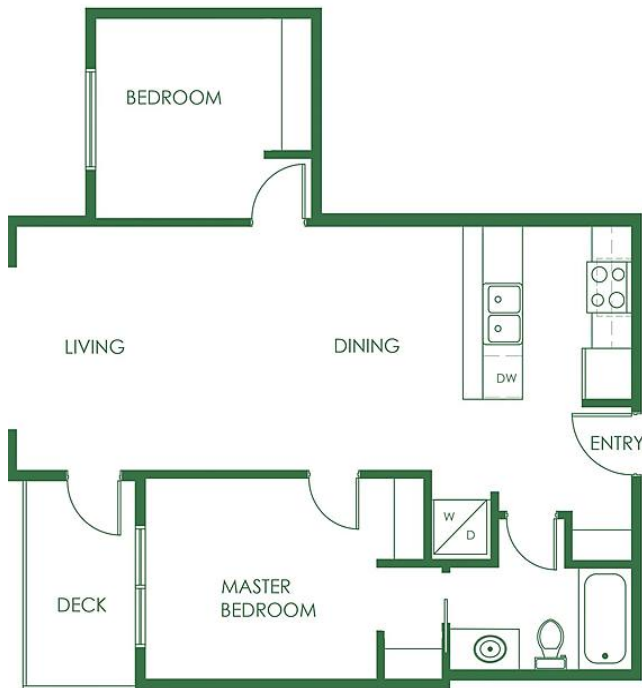


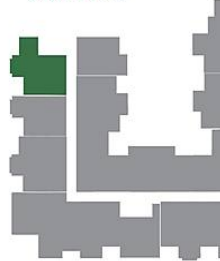
305 19945 Brydon Crescent, Langley

\$619,900

1 2 BED | 1 BATH | 795 SQ.FT.
ATRIUM



3RD FLOOR



2ND FLOOR



Welcome home at Atrium, located in Langley City. This CORNER UNIT is offering 2 Beds, 1 bath for 795 sqft of bright and open concept layout. Modern color scheme includes a bold gourmet style kitchen w/ custom continuous waterfall quartz countertops, Quality S/S Samsung appliances featuring a Deluxe Gas range with intuitive control, a convenient French door fridge w/ cool select pantry and a Double dish bowl undermount stainless steel sink. 1908 sq ft of Amenities including an Olympian approved gym, Entertainment space w/kitchen and Outdoor play area. Fantastic location Just minutes away from the proposed Skytrain station, Creek Trail, Off leash Dog park and Brydon Park. 1 park+1 storage. BONUS 2 Year Rental Back Guarantee from developer. Estimated completion July- August 2022. Call today!

KEY INFORMATION

MLS® R2663905

Residential Attached

Langley City

2 Bedrooms

1 Bathroom

795 SF

\$242.17 Maintenance Fees

FEATURES

Year Built: 2022

Listed By: Medallion International Realty

DIMENSIONS, SIZES, SPECIFICATIONS, LAYOUTS AND MATERIALS ARE APPROXIMATE ONLY AND DIMENSIONS, SIZES, AND MATERIALS ARE APPROXIMATE ONLY AND SUBJECT TO CHANGE WITHOUT NOTICE. PLEASE SEE SALES TEAM.

