

58 8701 16th Avenue, Burnaby

\$1,398,000



One of the largest Half-duplex style townhomes in the complex at VERY SPACIOUS 2,048 SQFT on 3 levels with a PRIVATE and tree-lined backyard. Only a few units have the private backyard off of the family room. side by side DOUBLE car garage included. 3 bedrooms 4 bathroom, large living-room, and recreation room for entertaining, office, gym or playroom! Desirable neighbourhood in the Crest of East Burnaby. Well maintained strata, New roof & gutter in 2020. Beautiful quiet area easy access to Hwy#1, Lougheed Mall, Costco, Burnaby Lake, SFU and Royal City Center etc. A few minutes walk to Armstrong Elementary, Cariboo Hill Secondary. 5 min drive to Best private school: John Knox Christian/St. Michael's School. Very low strata fee. Perfect for a Growing family. One of the best in the area.

KEY INFORMATION

MLS® R2664164

Residential Attached

The Crest

3 Bedrooms

4 Bathrooms

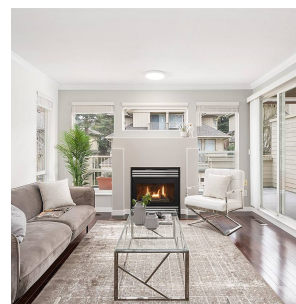
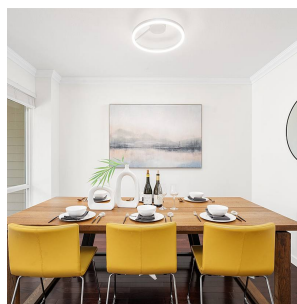
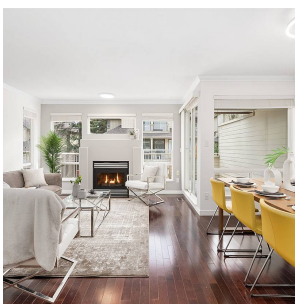
2,048 SF

FEATURES

Year Built: 1999

Views: Trees

Listed By: rennie & associates realty ltd.



Simon Lai PREC*
778.881.3603
slai@rennie.com
rennie.com/simonlai

rennie