

# 9 2290 Boley Street, Abbotsford

\$1,849,000



Welcome to Timberlane Phase 2 by Algra Bros Developments. The Spruce 10 home is perfectly designed for family living 3,616 sq ft, 4 Bed + Flex, 2 Bath + Powder. Optional finished lower level with additional 2 Bed + Rec room + Flex. Open Concept living, light and bright floor to ceiling windows, taking in the magnificent unobstructed Valley and Mt. Baker Views. Kitchen w/SS appliances, quartz counter, WI Pantry, Large dining room leading out to the massive covered south facing deck. Living room with double height ceilings. Master bedroom with massive WI closet, luxury ensuite, free standing bathtub, . There is still time to customize and make it your own! Close to shopping and freeway. **\*\*SHOWHOME LOCATED @ 12 - 2290 Boley Street.\*\***

## KEY INFORMATION

MLS® R2664446

Residential Detached

Abbotsford East

6 Bedrooms

4 Bathrooms

3,616 SF

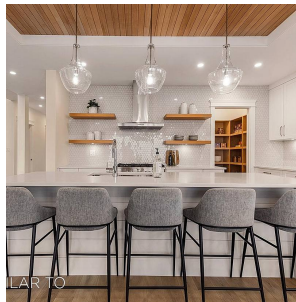
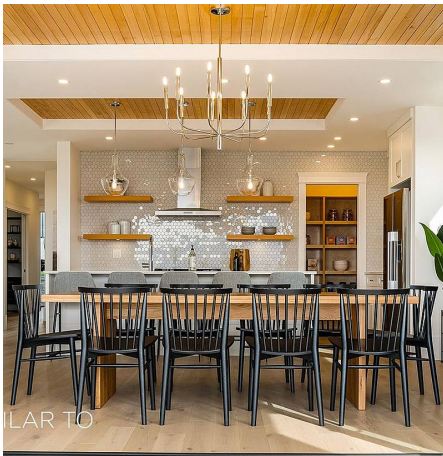
4,747 SF Lot

## FEATURES

Year Built: 2022

Views: Mt. Baker

Listed By: Homelife Advantage Realty (Central Valley) Ltd.



rennie