

43832 Keith Wilson Road, Chilliwack

\$3,699,000



Country, rural setting but only 5 mins from Garrison Crossing/HWY1 and walking distance to the Vedder Rotary Trail. First time on the market. 3.7 acre property with 2 custom, European-built craftsman homes. Executive home is 4813 sf with master on the main, total of 5 bed (4 master bedrooms!), 6 bathrooms, recroom, office, gym, sunroom and striking chef's dream kitchen. Features: 3 bay garage, carport, hickory hardwood, crawl space, AC, grand stone fireplace, spa like ensuite w/ whirlpool tub, his & hers WI closets, and more. Outdoor features: 2 massive covered patios, with a hottub and outdoor fireplace with a TV, fenced yard, firepit, garden, plenty of parking. The 2nd home features 2 suites, 2 bdrm & a 1 bdrm generating great income. This impressive, stunning home won't last.

KEY INFORMATION

MLS® R2664977

Residential Detached

Chilliwack

8 Bedrooms

8 Bathrooms

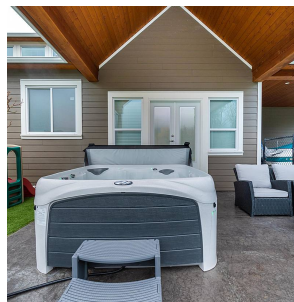
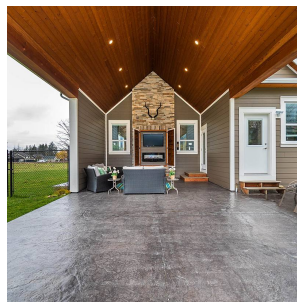
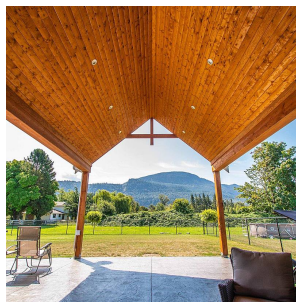
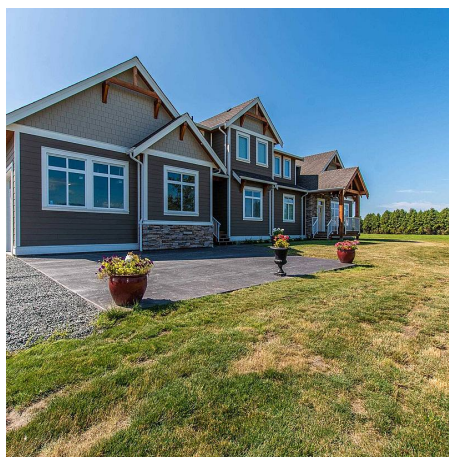
6,895 SF

FEATURES

Year Built: 2018

Views: mountains

Listed By: Homelife Advantage Realty (Central Valley) Ltd.



rennie