

12 43925 Chilliwack Mountain Road, Chilliwack

\$1,425,000



Welcome to Chilliwack Mountains second last home of the newest exclusive subdivision. This 3-storey home w/ legal basement suite will offer breathtaking views! With quality interior finishes, vaulted ceiling, and a stunning kitchen, including SS appliances and designer lighting. This is the perfect location for commuters as its only mins away to all amenities in Chilliwack and Highway 1! This home is anticipated to be completed in June 2022. Call today for more details.

KEY INFORMATION

MLS® R2664250

Residential Detached

Chilliwack

5 Bedrooms

4 Bathrooms

3,390 SF

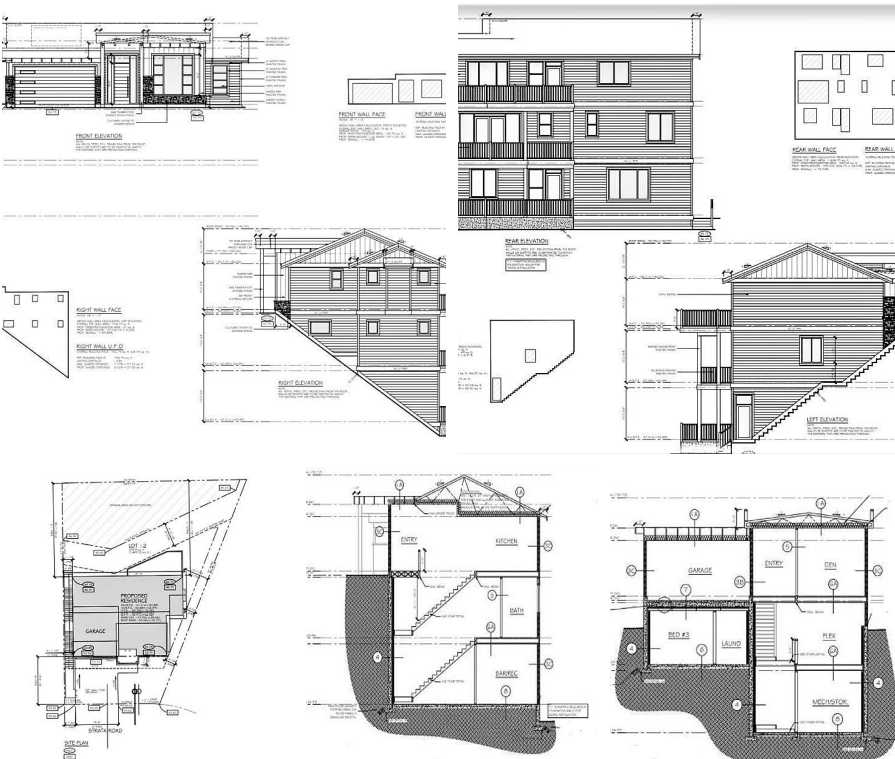
5,500 SF Lot

FEATURES

Year Built: 2022

Views: Mountains and Valley

Listed By: Sutton Group-West Coast Realty (Abbotsford)



rennie