

# 36764 Dianne Brook Avenue, Abbotsford

\$1,398,000



New East Abbotsford New Home Assignment, Sumas Mountain is just around the corner from the sought after Auguston development. Enjoy your dream home among the tall timbers situated to capture the full tranquil forest experience just minutes to the city center. Call today for more information! Estimated Completion June 2022. This home is roughed in for a secondary suite. Approx cost by builder is \$25,000 to finish.

## KEY INFORMATION

MLS® R2663552

Residential Detached

Abbotsford East

5 Bedrooms

4 Bathrooms

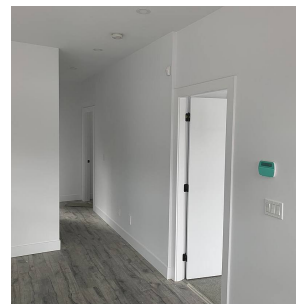
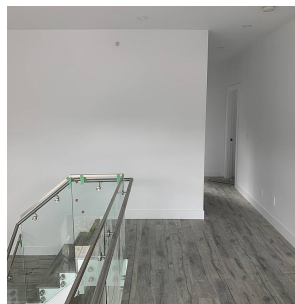
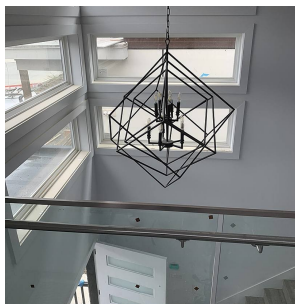
2,511 SF

3,229 SF Lot

## FEATURES

Year Built: 2022

Listed By: Sutton Group-West Coast Realty (Surrey/24)



rennie