

5202 6461 Telford Avenue, Burnaby

\$839,000



Location! Location! Location! Metroplace by Intracorp Projects. Beautiful NE corner sky level 2 bedroom & 2 full bath. 9' ceiling with Wolfe stove, Miele dishwasher, quartz countertop, double sinks, laminate floor and prestigious Eggersman cabinets. Beautiful mountain views. Close to skytrain & right across Metrotown & Crystal Mall. One parking & One storage, pets & rentals allowed.

KEY INFORMATION

MLS® R2665199

Residential Attached

Metrotown

2 Bedrooms

2 Bathrooms

760 SF

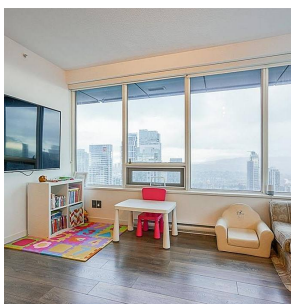
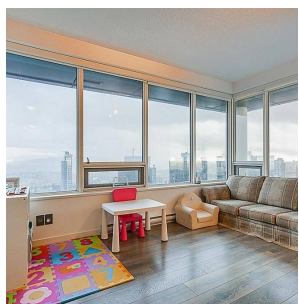
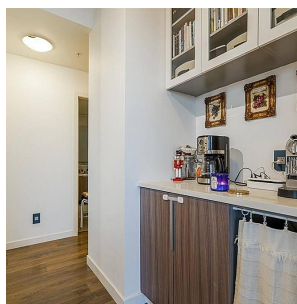
\$285.44 Maintenance Fees

FEATURES

Year Built: 2014

Views: Mountain

Listed By: Emily Oh Realty



rennie