

42 6450 Blackwood Lane, Chilliwack

\$829,900



BRIGHT OPEN CONCEPT END UNIT in "The Maples". Centrally located in Sardis, walking distance to schools and all amenities. This HUGE 2533sf townhome is very spacious and features 4+ bedrooms, 4 bathrooms and a fully finished basement with wet bar area & fridge. The kitchen has ample storage, granite counters, an island w/ power and a pantry. Walk out from the main level to a patio & fully fenced backyard. Living area is open & cozy with a gas fireplace. Master bedroom on the main w/ walk-in closet and ensuite. Upstairs has 2 large bedrooms & a nook. Bsmt w/ 3pc bathroom, large rec room, bedroom & flex areas for storage and a gym. Bonus A/C, double car garage with full size driveway. No Rentals , 2 Pets allowed!

KEY INFORMATION

MLS® R2665588

Residential Attached

Chilliwack

4 Bedrooms

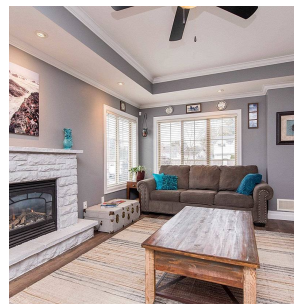
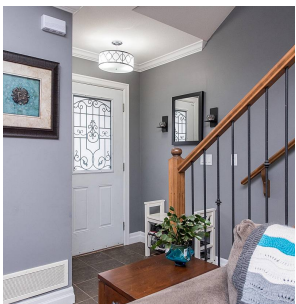
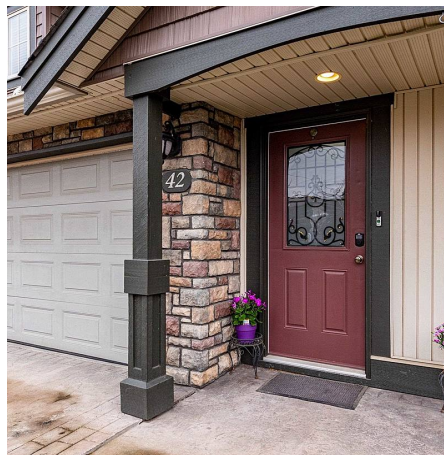
4 Bathrooms

2,533 SF

FEATURES

Year Built: 2006

Listed By: rennie & associates realty ltd.



Clarke Mallory PREC*
604.316.9917
cmallory@rennie.com
rennie.com/clarkemallory



Kim Mallory PREC*
604.316.3635
kmallory@rennie.com
rennie.com/kimmallory

rennie