

1375 Plateau Drive, North Vancouver

\$2,650,000



Pemberton Heights is an amazing family oriented neighbourhood! The main level enjoys 3 bedrooms, open living & dining area w/ fireplace, kitchen w/ eating area opening out to a 160 SF deck. School catchment: Capilano Elem & Carson Graham. Super private, the area enjoys privacy, corner store/ coffee bar & many walking trails.

KEY INFORMATION

MLS® R2665848

Residential Detached

Pemberton Heights

5 Bedrooms

3 Bathrooms

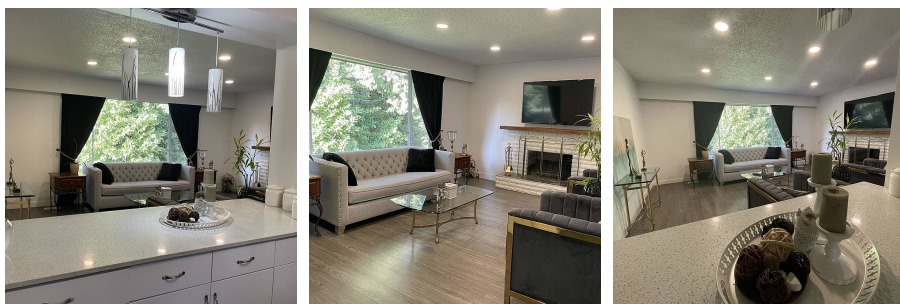
2,302 SF

6,160 SF Lot

FEATURES

Year Built: 1971

Listed By: RE/MAX Crest Realty



rennie