

9895 Gracemar Drive, Chilliwack

\$1,350,000



Enjoy this fully fenced, landscaped yard or just soak in the pool. Newer roof, new driveway and stamped concrete surrounding the 32' x 16' fenced off in ground pool heated by solar panels. New furnace, new hot water tank, new windows and doors and new appliances. Complete new Parameter drain system installed with new grass. Connected to City water and sewer. Double Garage with 220 power. Parking for 6 plus room for the RV/boat. Insulated/finished man cave with electricity. Large storage shed. Just move in and enjoy

KEY INFORMATION

MLS® R2665124

Residential Detached

Chilliwack

4 Bedrooms

4 Bathrooms

2,180 SF

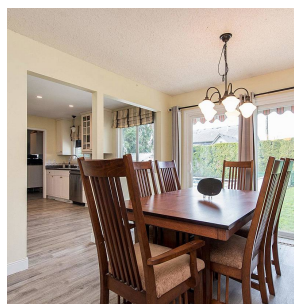
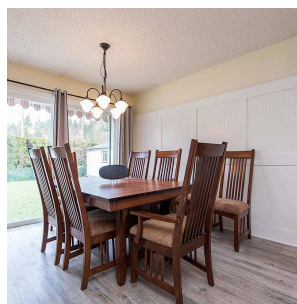
12,632 SF Lot

FEATURES

Year Built: 1972

Views: Mountain

Listed By: Vybe Realty



rennie