

1308 128 Street, Surrey

\$2,298,000



South of Marine Drive! Quietly located in prestigious Ocean Park across from Kwomais Park. This beautiful 4000 SF 6 bed, 5 bath home features stunning craftsmanship, rich hardwood flrs and incredible millwork. You'll adore the chef's kitchen with fabulous cabinetry, large island and professional grade appls opening to a gracious family rm. The upper level boasts a spacious master bdrm with luxurious ensuite, 3 additional bdrms, ALL ENSUITED and a bonus sunroom with partial ocean view. The fully finished lower level has a large games room plus two additional bdrms. Situated on a beautifully landscaped yard, with a stunning stone fire place and expansive decks for entertaining. A charming family home with walking distance to the park, water and all amenities Ocean Park Village has to offer!

KEY INFORMATION

MLS® R2665931

Residential Detached

Crescent Beach

6 Bedrooms

5 Bathrooms

4,000 SF

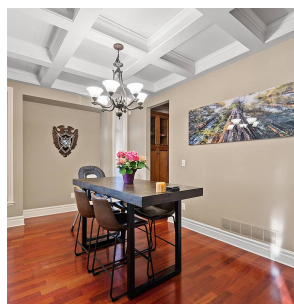
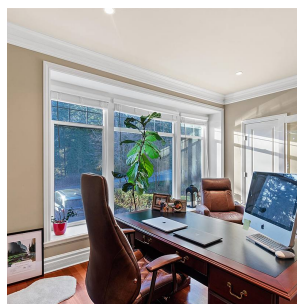
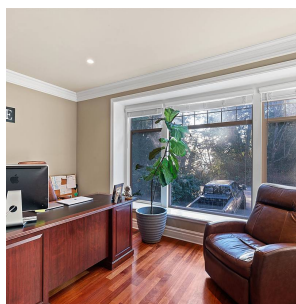
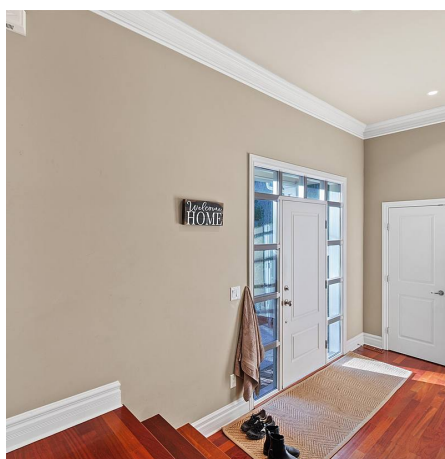
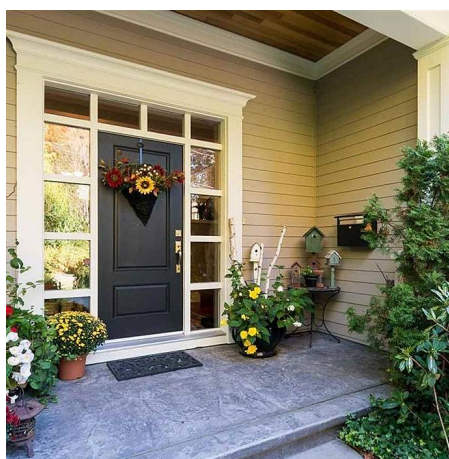
4,998 SF Lot

FEATURES

Year Built: 2005

Views: Park

Listed By: RE/MAX Select Properties



rennie