

45661 Reece Avenue, Chilliwack

\$1,249,000



Absolutely Beautiful Home. This 3 big bedrooms 2 full baths on main floor Boast high vaulted ceiling with modern open space, white kitchen cabinets and big island ideal for entertaining. Basement features 1 bedroom suite. Big flat fully fenced yard ideal for kids and your furry babies.

KEY INFORMATION

MLS® R2664711

Residential Detached

Chilliwack

3 Bedrooms

3 Bathrooms

2,223 SF

4.355 SF Lot

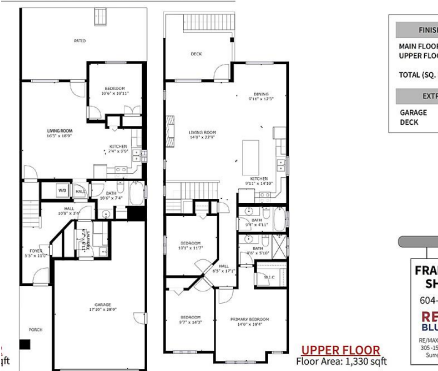
FEATURES

Year Built: 2018

Listed By: RE/MAX Blueprint Realty



45661 Reece Ave Chilliwack V2P 2Z9



This blueprint is developed for marketing purposes. Therefore it is not intended for self-constructed or construction use. No information is taken from original blueprints nor from State Plans. Areas have been calculated but changes and/or omitted areas are allowed. Property and to the center line of common walls. Rooms whose length is less than 6 feet, or a portion of one-half of its total area is reported as units on approximately dimensioned. Adding to this report is not intended to reach the square footage. COPYRIGHT © 2012-2016, RE/MAX Blueprint Realty



rennie