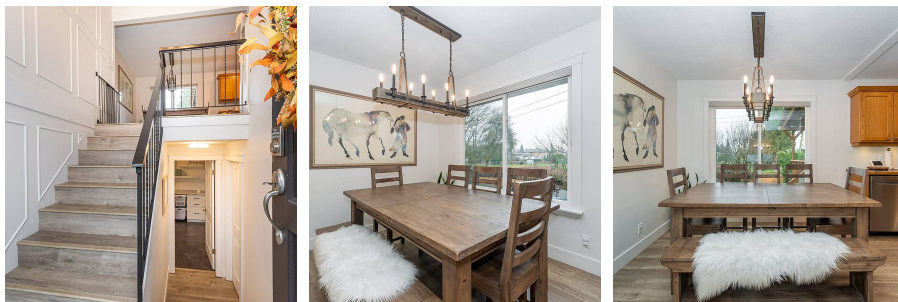


46392 Topley Avenue, Chilliwack

\$1,249,000



Welcome home to this BEAUTIFUL 4 bedroom 2 bath Family home! This home has been extensively renovated and sits on a HUGE 70' x 100' (7400 sq foot lot) backing Guinet park in Beautiful Fairfield Island. With a private gate entrance to the park right from your fully fenced backyard it is a perfect home to raise your family. Enjoy watching the kids in the park as you sit on this big covered patio. As soon as you walk into this home you can tell it has been extensively renovated. All new vinyl plank flooring, paint from top to bottom, light fixtures including pot lighting in kitchen and living area, bathrooms, S/S appliances, custom blinds, in house speakers in ceiling!, and just too much to list here! This home has room for you RV with 30 amp plugin, and electrical ran for a pool/hot tub.

KEY INFORMATION

MLS® R2666189

Residential Detached

Chilliwack

4 Bedrooms

2 Bathrooms

2,254 SF

7,492 SF Lot

FEATURES

Year Built: 1972

Views: MOUNTAIN

Listed By: Royal LePage Wheeler Cheam

rennie