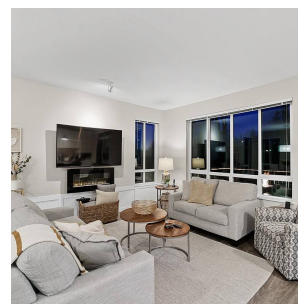
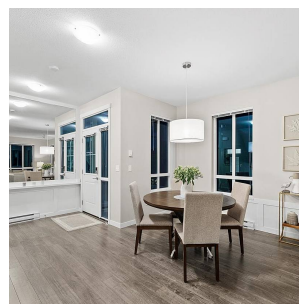
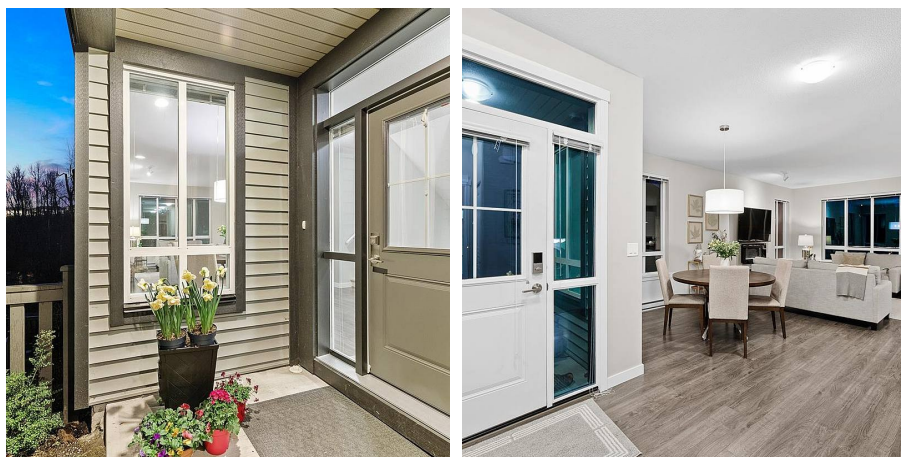


# 128 30930 Westridge Place, Abbotsford

\$1,099,000



**1/2 DUPLEX!!**



1/2 DUPLEX!!! 2,200+ Sq Ft in BRISTOL HEIGHTS! Spacious 3 bed/3 bath layout w beautiful upgrades incl warm laminate wood flooring, wainscoting, built in shelves, double SIDE BY SIDE garage, powder room ON THE MAIN, new window screens & much more. Open kitchen w white cabinetry, & gorgeous stainless appliances incl barn door fridge & slide-in stove. UNOBSTRUCTED GREEN BELT VIEWS from your private deck & fully fenced yard. Upstairs has 3 large bdrms incl master suite w walk in closet & private en suite w double vanities & oversized walk in shower. The large basement offers an ADDITIONAL LIVING AREA & is a stunning recreational space for the family. Enjoy all the benefits of a detached home w the convenience & amenities of a townhome! Resort style amenities incl pool, gym, games rooms & more!

## KEY INFORMATION

MLS® R2666245

Residential Attached

Abbotsford West

3 Bedrooms

3 Bathrooms

2,388 SF

## FEATURES

Year Built: 2019

Views: Greenbelt

Listed By: eXp Realty (Branch)

**rennie**