

250 32550 Maclure Road, Abbotsford

\$725,000



Welcome to the Clearbrook Village!! One of Abbotsford's most cherished townhomes! Ideal for the first-time homeowner - very affordable & LOW STRATA FEE is the number one reason for this complex's popularity and demand. Very neat & clean has 3 bedrooms & 1 1/2 bathroom also a private fenced backyard. This unit is in a great location with no one behind and near a cute little playground. Lots of Visitor parking. Located in Central Abbotsford, walking distance to Abbotsford's Schools at all levels, Rotary Stadium, Public Library, Grocery Stores, and Much more! RENTALS ALLOWED! Call today for your private showing.

KEY INFORMATION

MLS® R2666128

Residential Attached

Abbotsford West

3 Bedrooms

2 Bathrooms

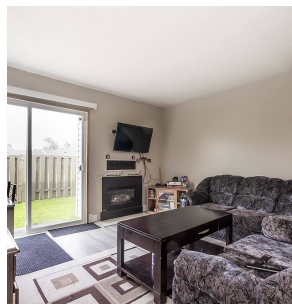
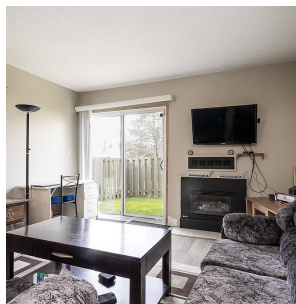
1,211 SF



FEATURES

Year Built: 1980

Listed By: Sutton Group-West Coast Realty (Abbotsford)



rennie