

# 27895 Junction Avenue, Abbotsford

\$1,475,000



CORNER LOT! 2003 built, two storey home with a 2 bedroom LEGAL basement suite beautifully located in a desirable neighbourhood in the Aberdeen area in Abbotsford. This 2,745 sqft family home features 5 bedrooms, 3 full bathrooms, sitting on a 6,646 sqft LOT. Home has a great layout with two separate laundry rooms, vaulted ceilings in the living room, and 9 feet ceilings plus soundproof in the basement area making it feel more spacious and increased privacy. Located in a family neighbourhood and great location making it a perfect home for a growing family to call this their home.

## KEY INFORMATION

MLS® R2666287

Residential Detached

Aberdeen

5 Bedrooms

3 Bathrooms

2,745 SF

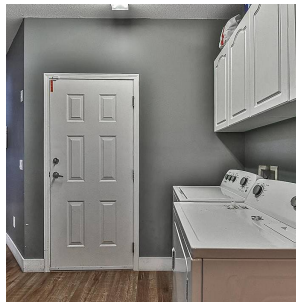
6,646 SF Lot



## FEATURES

Year Built: 2003

Listed By: eXp Realty (Branch)



rennie