

# 109 232 Sixth Street, New Westminster

\$698,000



This is an assignment of contract Moody on the Hill, the newest addition of modern condominiums located at the corner of 6th and Welsh Street in Queens Park community of New Westminster, just 10 minutes of leisure walking away from the Columbia and New Westminster Skytrain Stations. Moody Hill homes are a part of a lively surrounding, just steps from plaza, grocery stores, boutiques, and restaurants. The 6 storey building featuring homes designed with attention to detail and a perfect mix of style and functionality infused to each home. Featuring 9' ceilings, open concept living, stainless steel appliances, high quality cabinets and flooring. 9' foot ceiling.

## KEY INFORMATION

MLS® R2667017

Residential Attached

Uptown

2 Bedrooms

2 Bathrooms

920 SF

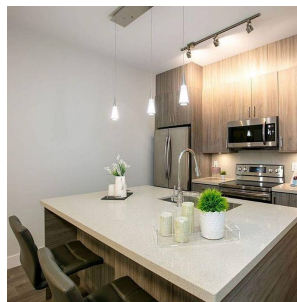
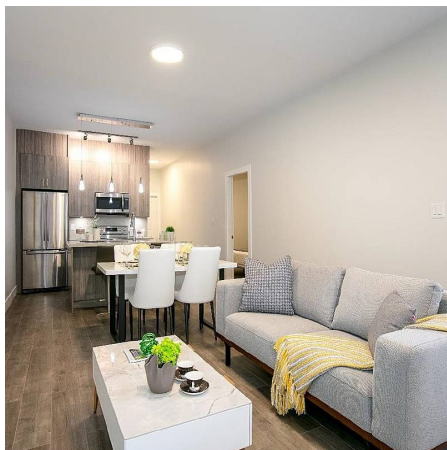
\$329.70 Maintenance Fees

## FEATURES

Year Built: 2022

Views: CITY

Listed By: Team 3000 Realty Ltd.



rennie