

32680 Esquimalt Terrace, Abbotsford

\$1,349,000



Updated Family Home! This home boast Open concept kitchen/ living/ dining room. Walking distance to Rotary Stadium, Gladwin Park and W.J Mouat Secondary. Easy access to Shopping and transportation. Private flat backyard with garden beds and mature fruit trees (cherry, apple and plums) for summer entertaining.

KEY INFORMATION

MLS® R2667374

Residential Detached

Abbotsford West

6 Bedrooms

3 Bathrooms

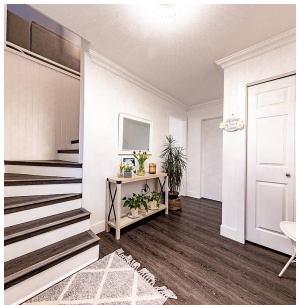
2,121 SF

6,000 SF Lot

FEATURES

Year Built: 1983

Listed By: RE/MAX Blueprint Realty



rennie