

2 6138 128 Street, Surrey

\$1,250,900



Introducing: Panorama Park! This boutique collection of 35, three and four bedroom townhomes inspired by the modern family is located in the heart of Surrey's Panorama neighborhood. Smart home equipped with wifi enabled doorbell and switches & ready for work from home with enhanced Cat6 wired in internet capabilities. Custom built cabinetry at entryway with full sized mirror greets you at the door, and a warm fireplace is in the heart of every home. Amenities include a 2 story clubhouse with billiards room lounge featuring kitchen with harvest style table and cozy lounge. A community garden sits alongside an outdoor playground and walking paths for easy family enjoyment.

KEY INFORMATION

MLS® R2666864

Residential Attached

Panorama Ridge

4 Bedrooms

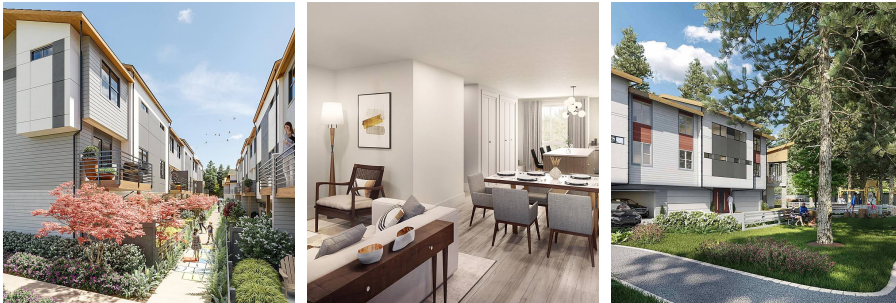
3 Bathrooms

1,529 SF

FEATURES

Year Built: 2022

Listed By: Pilothouse Real Estate Inc.



rennie