

# 109 2450 Garden Drive, Vancouver

\$749,900



Grafia by Porte Homes is located on a quiet residential street just steps from Commercial Drive, transit and schools. The development will be a 6 story wood-frame building and amenities will include a lounge, gym, dog wash station, rooftop terrace, garden plots and more. Completion anticipated Fall 2024. This 1bed 1bath 1flex and den is 634SF, facing East and features full size S/S appliance with gas stove. Laminate flooring through out. Home comes with 1 parking stall and one bike locker. Book an appt to own in our limited pre-construction release.

## KEY INFORMATION

MLS® R2667716

Residential Attached

Grandview Woodland

1 Bedroom

1 Bathroom

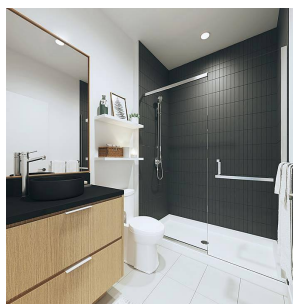
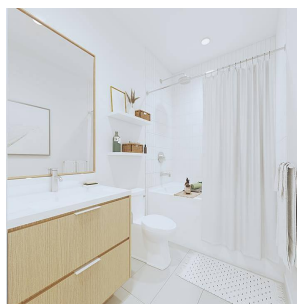
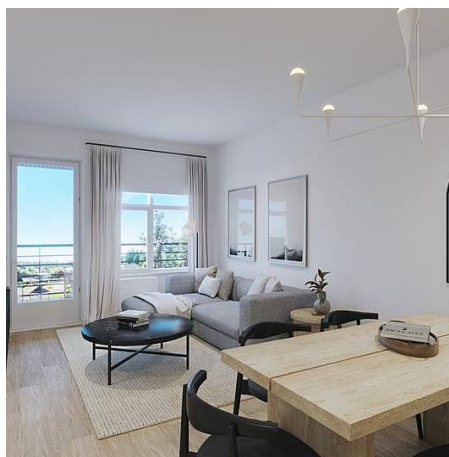
634 SF

\$291.93 Maintenance Fees

## FEATURES

Year Built: 2024

Listed By: Porte Realty Ltd.



rennie