

28 3851 Blundell Road, Richmond

\$849,888



PRIVATE. SPACIOUS. COZY. Perfect family T/H in sought after Beacon Cove. Lovely 3 bed, 2 bath, 2 storey boasts ample in/out space. Living & dining area has 16 foot vaulted ceilings, wood burning f/p & opens to a private fenced yard. Large kitchen has lots of counter/cupboard space. Main floor also has powder room, storage & laundry. Upper floor has 3 well appointed bedrooms, a huge primary bedroom, full size bath, and flex space. The home also has covered carport, exterior shed, bike zone, & front/back patios for entertaining. Rentals/pets allowed w/restrictions, recreation centre w/gym & lots of amenities. Location can not be beat, steps from dyke paths, parks, schools, shopping & Steveston Village. SHOWINGS BY APPOINTMENT

KEY INFORMATION

MLS® R2667805

Residential Attached

Quilchena

3 Bedrooms

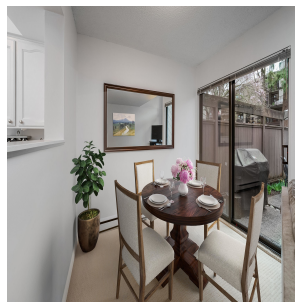
2 Bathrooms

1,314 SF

FEATURES

Year Built: 1976

Listed By: rennie & associates realty ltd.



Bien Matute
604.603.2700
bmatute@rennie.com
rennie.com/bienmatute

rennie