

112 2235 Broadway, Vancouver

\$774,900



“10 for 10” at Popolo! Only 10% deposit required for the next 10 homes before our PC closes its doors this spring. Popolo is Grandview-Woodland's first 6 storey condo set to complete in early 2023. Live steps from Commercial Drives' dining, shopping & Vancouver's most accessible transit-hub (Commercial & Broadway). This Europeaninspired 1 bedroom home features a livable layout with a 471 sqft patio for summer evenings. The chefs' kitchen includes a fully integrated Fulgor Milano fridge, gas cook-top, dishwasher, microwave, quartz countertops/ backsplash, full size pantry, and a custom island. A/ C & front-loading European washer/dryer in all homes. Enjoy low maintenance amenities: Popolo Lounge, hobby/art studio, secure visitor parking, car & dog wash areas. Book your appointment today!

KEY INFORMATION

MLS® R2667103

Residential Attached

Grandview Woodland

1 Bedroom

1 Bathroom

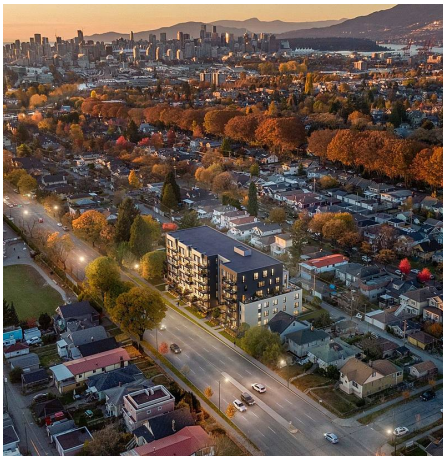
579 SF

\$245.22 Maintenance Fees

FEATURES

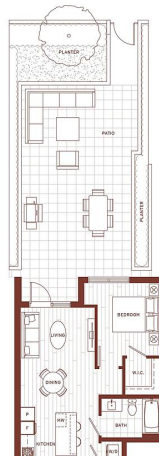
Year Built: 2022

Listed By: Sutton Group-West Coast Realty



E5a

1 BEDROOM
LEVEL 1
LIVING 579 SF
PATIO 471 SF
TOTAL 1,050 SF



rennie