

# 16467 86b Avenue, Surrey

## \$3,698,000



Welcome to one of Fleetwood's highly desired neighborhoods in Surrey. This stunning modern home is situated on an 18,000 sqft plus lot with massive 8,200 sqft plus of living space and a 1,300 sqft covered deck. Open concept home offers an open kitchen with a separate spice kitchen and high ceilings. Features include 11 bedrooms, 9 bathrooms, an entertaining media room with a wet bar and radiant heat throughout the home. 2+1 bedroom basement suites and a 1 bedroom side in-law suite on the main with a full washroom and walk out balcony. A luxurious 3 car garage with a large open driveway that provides ample parking. Walking distance to both elementary and high school including the academic prestigious Holy Cross Regional High School.

### KEY INFORMATION

MLS® R2667827

Residential Detached

Fleetwood Tynehead

11 Bedrooms

9 Bathrooms

8,280 SF

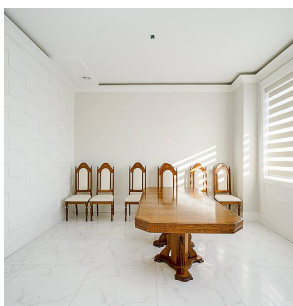
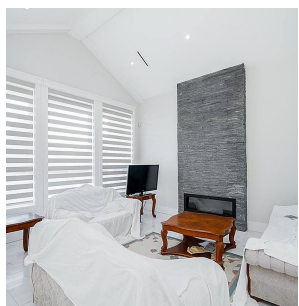
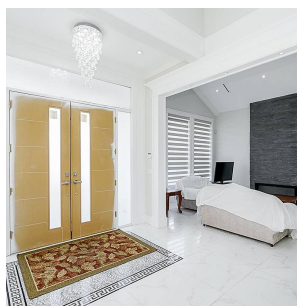
18,297 SF Lot

### FEATURES

Year Built: 2019

Views: Mountain View

Listed By: Century 21 Supreme Realty Inc.



rennie