

8 12775 63 Avenue, Surrey

\$1,099,000



ENCLAVE ! Great Location .Very clean and well kept Spacious town home in much sought after area of boundary park. 2261 Sq ft with 3 Large sized bedrooms on top floor and 4th spacious bedroom(Doesn't have walk-in closet) in basement , 4 bathrooms, open concept with shaker kitchen cabinets, Granite(quartz)counter tops, stainless steel appliances, good size family room with fire place, large sized living room, east facing sundeck and patio, fully fenced private back yard. Double garage for side by side parking. Lots of visitor and street parkings. Walking distance to park, schools, public bus service. Easy access to all major routes. Open house on Sat/Sun Mar 26,27 from 2 to 4 pm.

KEY INFORMATION

MLS® R2668250

Residential Attached

Panorama Ridge

4 Bedrooms

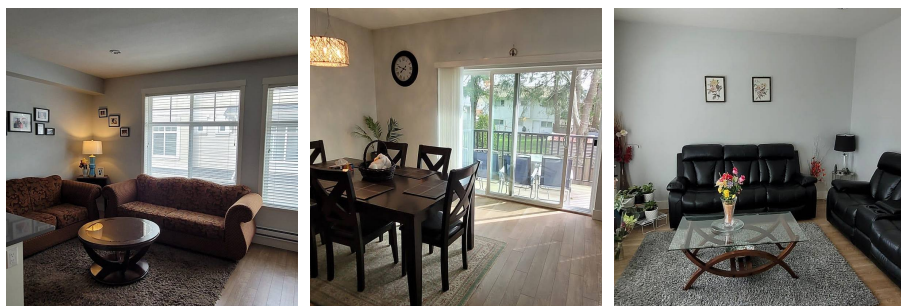
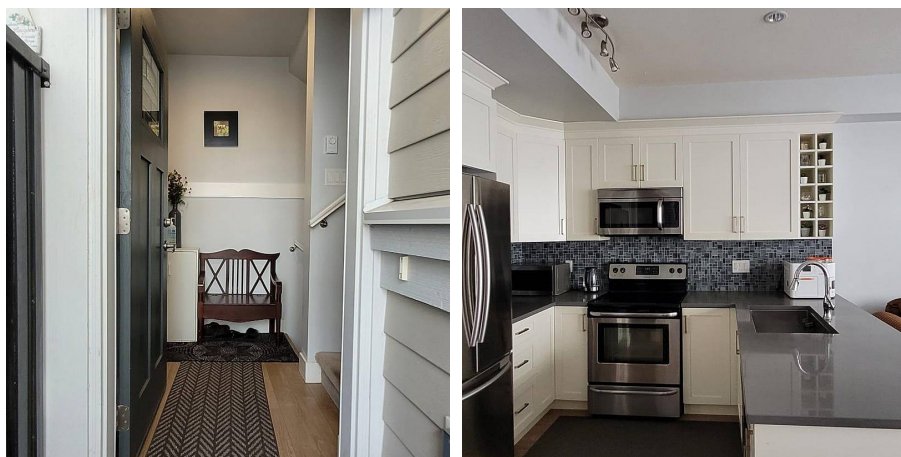
4 Bathrooms

2,261 SF

FEATURES

Year Built: 2012

Listed By: YPA Your Property Agent



rennie