

# 503 22265 Dewdney Trunk Road, Maple Ridge

\$520,000



Welcome to a new ERA for downtown Maple Ridge. ERA is a master-planned community where approximately 1000 condominiums and city homes will span 3 city blocks, c/2 parks, shops, office space and retail. ERA will redefine the heart of Maple Ridge. This collection of one to three bedroom + den homes feature open versatile plans with the look of European luxury. All homes include A/C (heat pump), 9' ceilings (some 10'), engineered hardwood in main living area. Parking and storage. Simple, airy kitchens offer chimney-style hood fans, Italian inspired cabinetry, SS appliances, gas cooktop/convection oven and premium quartz countertops. Live in Luxury. Estimated completion early 2022.

## KEY INFORMATION

MLS® R2668385

Residential Attached

West Central

1 Bedroom

1 Bathroom

765 SF

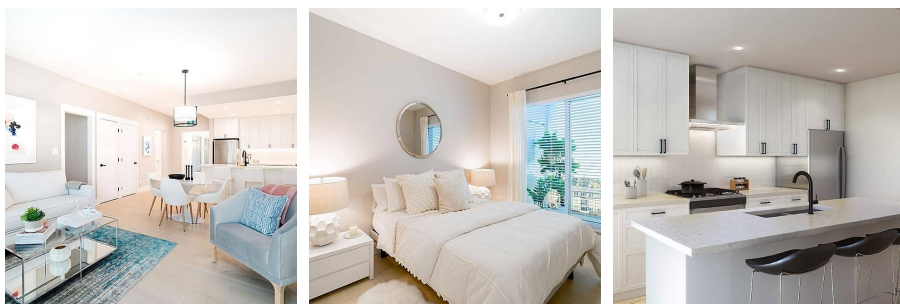
\$130.51 Maintenance Fees

## FEATURES

Year Built: 2022

Views: SOUTH

Listed By: Saba Realty Ltd.



rennie