

110 1788 Gilmore Avenue, Burnaby

\$1,200,000



Come check out this rarely available 2 bedroom & 3 bathroom Townhome living at Escala built by Ledingham McAllister. Large private Patio leads to your private entrance. Don't worry about the summer with this built in air conditioning, on both floors. Open kitchen flows into your over sized living room + dining area. Beautiful hardwood floors, throughout, with carpeted bedrooms, and well appointed bathrooms. Large bedrooms with plenty of space for Kings sized beds. Top of the line amenities include yoga room, gym + pool, steamroom and hottub. 2-5-10 warranty to be transferred. 1 parking stall and 1 storage locker included. **FIRST PUBLIC OPEN HOUSE: SAT. April 2 & SUN April 3: 2-4 PM.** Offers to be accepted as they come.

KEY INFORMATION

MLS® R2668462

Residential Attached

Brentwood Park

2 Bedrooms

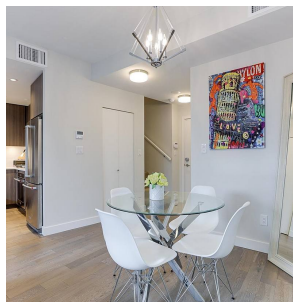
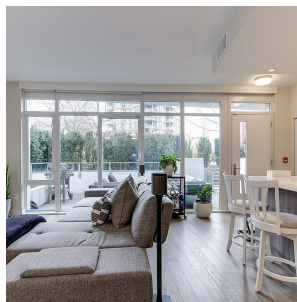
3 Bathrooms

1,245 SF

FEATURES

Year Built: 2019

Listed By: Jovi Realty Inc.



rennie