

4 1200 Edgewater Drive, Squamish

\$1,049,000



Concrete constructed townhome in a central location in Squamish with views of the surrounding mountains. This lovely home has room for a busy family with space for everyone! Three large bedrooms, U-shaped kitchen with lots of cupboards, two decks, private yard and a spacious over-sized double car garage for extra storage of sporting equipment and seasonal decorations or turn it into a man cave! Just steps to recreation including fishing, hiking, biking and more! Close access to Hwy 99. Family-friendly, well-managed complex.

KEY INFORMATION

MLS® R2669164

Residential Detached

Northyards

3 Bedrooms

3 Bathrooms

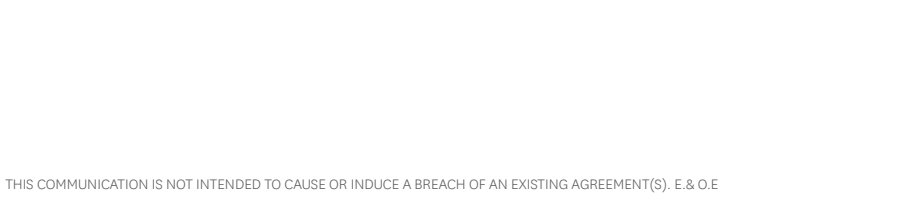
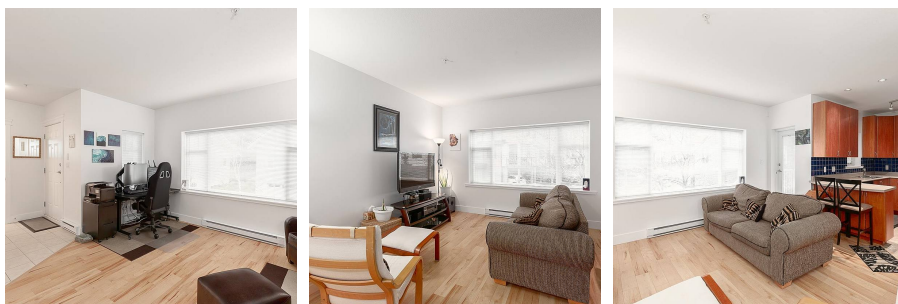
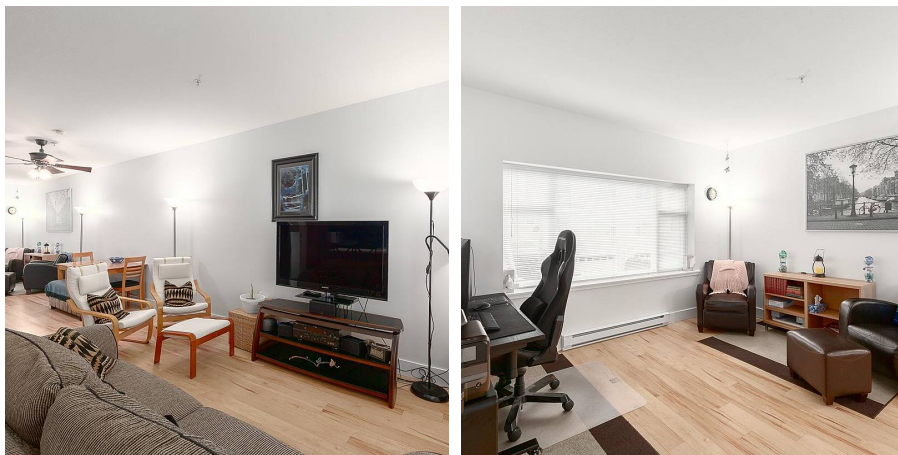
1,530 SF

FEATURES

Year Built: 2005

Views: SURROUNDING MOUNTAINS

Listed By: RE/MAX Sea to Sky Real Estate



rennie