

1506 520 Como Lake Avenue, Coquitlam

\$646,000



The "Crown" by Beedie located in the heart of West Coquitlam. The beautiful 1 bed and 1 bath, 587 sq/ft unit with stunning NE mountain view and floor to ceiling window. Large foyer area is great for greeting guests. This spacious open style kitchen features stainless appliances, gas cooktop, shaker style cabinets, quartz countertop & marble backsplash. Convenient and accessible location, steps away from Burquitlam skytrain station. Walking distance to Lougheed Town Centre, Burquitlam Park, Vancouver Golf Club and Simon Fraser University. 1 parking and locker are included. Currently tenanted at \$1700 per month.

KEY INFORMATION

MLS® R2669343

Residential Attached

Coquitlam West

1 Bedroom

1 Bathroom

587 SF

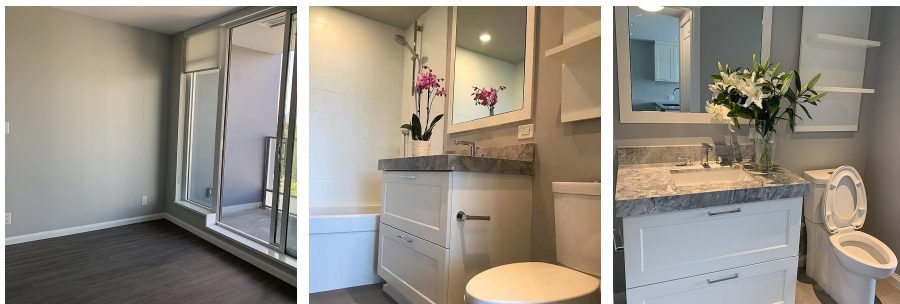
\$285.00 Maintenance Fees

FEATURES

Year Built: 2017

Views: Mountain

Listed By: Investave Properties Ltd.



rennie