

709 5598 Ormidale Street, Vancouver

\$629,900



Wall Centre by Central Park! This spacious 545 sq.ft 1 Bedroom west-facing suite is perfect for a first time home buyer or for investment! Features a Chef's kitchen w/custom cabinets, Quartz island waterfall Countertop & backsplash, Porter & Charles and Liebherr Stainless Steel appliance pkg w/ gas range. Open functional floor plan with floor to ceiling windows and covered patio, perfect for entertaining and to fulfill all your BBQ needs. Amenities include large 60ft indoor lap pool, terrace gardens, gym & party room. Conveniently located close to Joyce Skytrain Station, schools, groceries & restaurants. 1 Parking included.

KEY INFORMATION

MLS® R2669511

Residential Attached

Central Park

1 Bedroom

1 Bathroom

545 SF

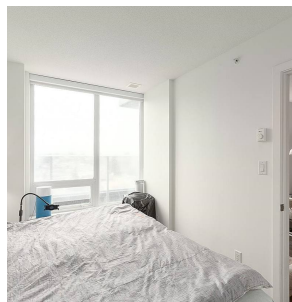
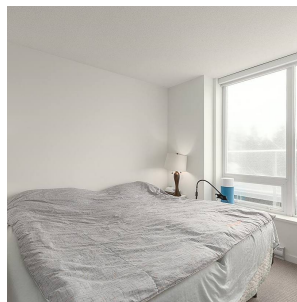
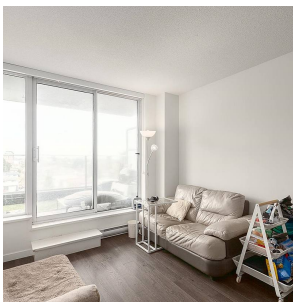
\$305.66 Maintenance Fees



FEATURES

Year Built: 2017

Listed By: Vancouver Luxury Realty



rennie