

10255 148a Street, Surrey

\$1,800,000



For more information, please click the Brochure button below. Alert to investor - proposed for 6 story apartment building by City of Surrey under land assembly. Buyer to verify with City of Surrey. 2 story detached house upstairs, 3 bedroom, 2 bathroom, 1 living room, kitchen, outdoor patio. Downstairs fully furnished 2 bedroom, 1 living room, with kitchen and bathroom. Needs to be seen, pergola on the front yard, marbled patio and vegetable garden in the back. Walking distance to Guildford mall 2 minutes, Superstore 2 minutes, Hjorth Park 1 minute, close to all amenities.

KEY INFORMATION

MLS® R2669793

Residential Detached

Guildford

5 Bedrooms

3 Bathrooms

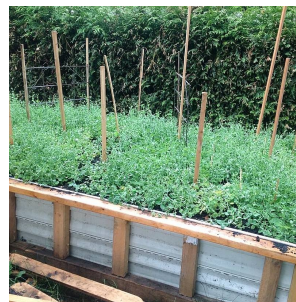
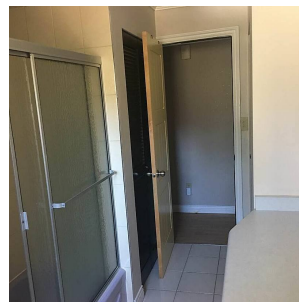
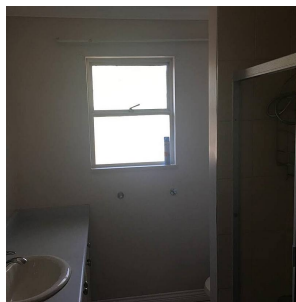
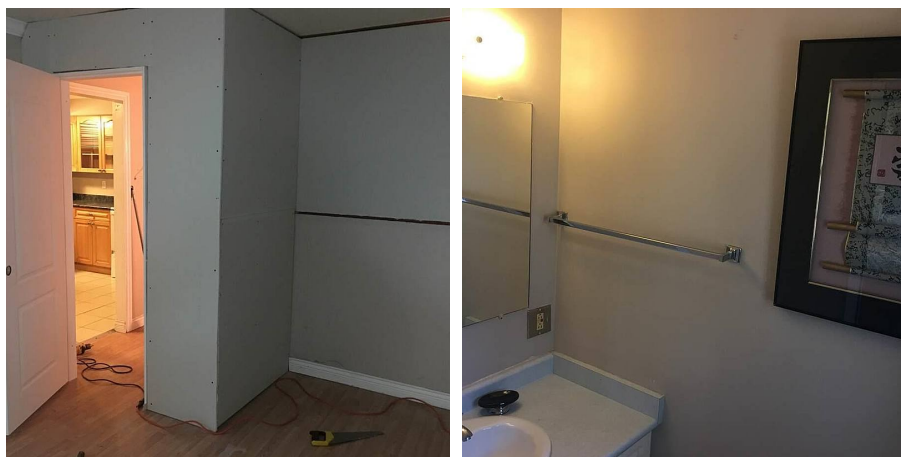
2,160 SF

7,389 SF Lot

FEATURES

Year Built: 1972

Listed By: Stratten Gates Real Estate Ltd.



rennie