

2205 867 Hamilton Street, Vancouver

\$1,199,000



JARDINE LOOKOUT by BOSA, YOUR PERFECT YALETOWN CONDO! Enjoy this spectacular 2 Bed 2 Bath 1,235 sqft. corner unit that has a beautiful N/W view of the city and mountains. Recent renovations, feature a designer kitchen with top-of-the-line stainless steel appliances, Caesar stone countertops, a raised bar, built-in oven, microwave & more! Host your guests in a spacious living & dining room that is perfect for entertaining, or enjoy the relaxation of your Spa-Style ensuite and a private balcony. Additional features include 2 side-by-side parking stalls, storage locker, and building amenities which include a gym, sauna and steam room. You're in the perfect location by just being steps away from Shopping Malls, Restaurants, BC Place, Rogers Arena, and much more!

KEY INFORMATION

MLS® R2669800

Residential Attached

Downtown

2 Bedrooms

2 Bathrooms

1,235 SF

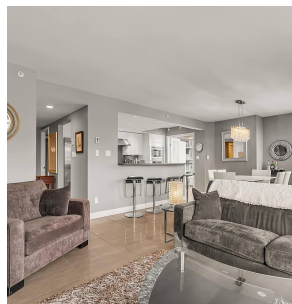
\$745.57 Maintenance Fees

FEATURES

Year Built: 1995

Views: North/North-West Facing View

Listed By: RE/MAX Real Estate Services



rennie