

115 5415 Brydon Crescent, Langley

\$485,000



City homes on the ravine! Walking distance to the FUTURE SKYTRAIN station. Located on a quiet street surrounded by plenty of walking & biking trails. Walk to groceries, rec centre, schools, bike park, parks, transit, restaurants, shops, casino, and the brew pub! This 1 bed, 1 bath home has 9' ceilings and features: stainless appliances including a GAS 5 burner range and oven with an airfry option, & quartz countertops. The master bedroom fits a king-sized bed. There is a custom fireplace for those cozy nights. Front-loading laundry with steam option. West facing and stays cool. 1 parking spot. The Audley features over 3,100 square feet of indoor private amenities including: Gym, yoga room, study room, workshop, dog/bike wash, guest room, PLAYGROUND, and sitting area with a FIREPIT.

KEY INFORMATION

MLS® R2669637

Residential Attached

Langley City

1 Bedroom

1 Bathroom

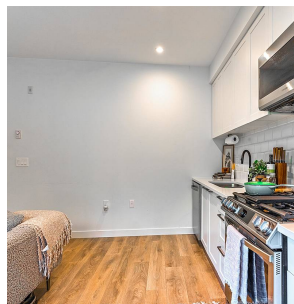
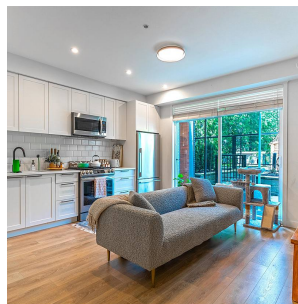
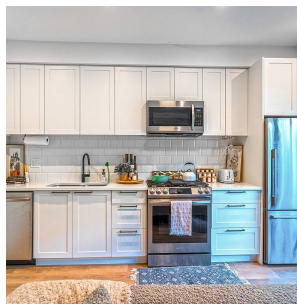
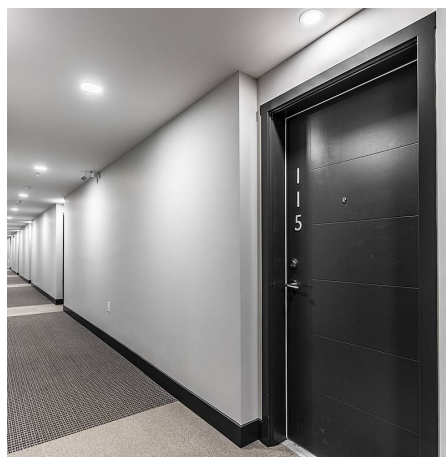
578 SF

\$151.43 Maintenance Fees

FEATURES

Year Built: 2021

Listed By: Sutton Centre Realty



rennie