

# 1002 602 Como Lake Avenue, Coquitlam

\$888,000



Built by BOSA, desirable location, fast growing area with easy transit commutes in the heart of Burquitlam. This NorthWest facing 829 Sq.ft 2bed/2 full bath corner unit features spacious open concept, high-end European style kitchen cabinets, gas cooktops, stainless steel appliances, Kohler fixtures, Blomberg washer/dryer, wide plank Vinyl floors. Amazing building amenities include Gym, party room, study lounge, outdoor BBQ & dining area and children's play area. Comes with 1 parking stall and 1 storage locker.

Comfortable environment Integrating leisure facilities with nature makes life colorful. Steps to Safeway, the Evergreen Line Burquitlam Skytrain Station, minutes driving to Lougheed Mall, major banks, numerous restaurants, and much more!

## KEY INFORMATION

MLS® R2668875

Residential Attached

Coquitlam West

2 Bedrooms

2 Bathrooms

831 SF

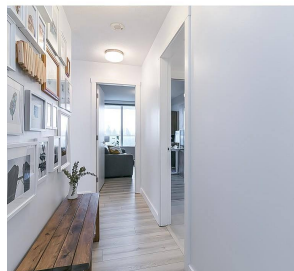
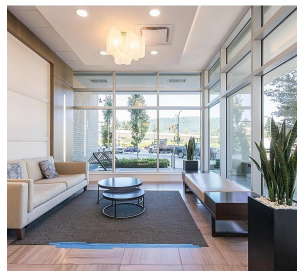
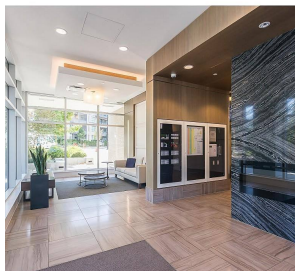
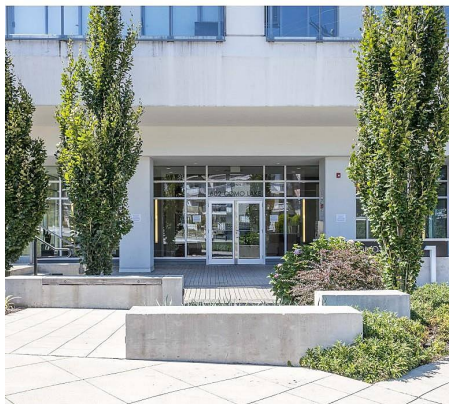
\$375.00 Maintenance Fees

## FEATURES

Year Built: 2017

Views: Mountains and City

Listed By: Homelife Benchmark Realty Corp.  
(White Rock)



rennie