

# 202 1610 Chesterfield Avenue, North Vancouver

\$589,000



Welcome to Canterbury House - a wonderful owner occupied building conveniently situated just a block from Lonsdale Avenue in the heart of North Vancouver. With over 1,000 sf, this spacious & well-appointed, upper level CORNER UNIT is perfect for up-sizers and down-sizers alike. Offering 2 large bedrooms, 1.5 bathrooms, a wood-burning fireplace, a nice-sized balcony, and IN-SUITE LAUNDRY. Nice and clean home loved by its current owners, though thoughtful modern touches could take this spacious suite to the next level. There are very few large condo options in the area. Walk to City Market, Whole Foods, Oxygen Yoga, Browns Socialhouse and other excellent restaurants, Starbucks, banks, the library, transit, and much more! Comes with 1 parking + locker. Open House | Feb. 2, SAT @2-4pm

## KEY INFORMATION

MLS® R2334228

Residential Attached

Central Lonsdale

2 Bedrooms

2 Bathrooms

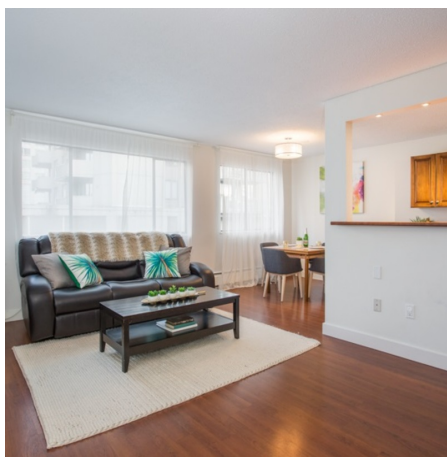
1,001 SF

\$443.30 Maintenance Fees

## FEATURES

Year Built: 1973

Listed By: rennie & associates realty ltd.



**Wilda Agassiz**

604.290.6754

wagassiz@rennie.com

rennie.com/wildaagassiz

**rennie**