

2131 Jordan Drive, Burnaby

\$1,993,000



Prestigious Parkcrest neighbourhood home. 4 bed 2 bath, well maintained home & gardens w/ fruit trees. Tiled entrance w/hall closet & skylight leads to open concept living, wood burning fireplace, large sliding glass doors to front deck w/ views of mature garden. Dining room w/ large picture windows; original hardwood floors & kitchen leads to large deck facing back garden. 3 bed/2 bath on main floor. Downstairs family room w/ fireplace, laundry, washer/dryer, sink, access to back garden. Add'l bedroom, cold storage, workshop, storage & 1 car garage. Back yard mature gardens, fig & apple trees, blackberries, raspberries, herb & garden boxes + storage shed & storage under back deck. Brentwood close by.

KEY INFORMATION

MLS® R2669896

Residential Detached

Parkcrest

4 Bedrooms

2 Bathrooms

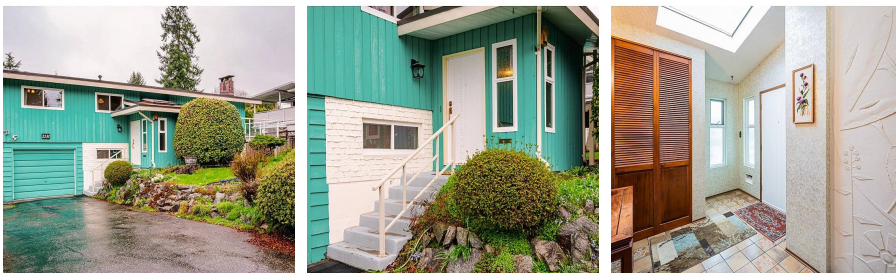
2,240 SF

8,906 SF Lot

FEATURES

Year Built: 1964

Listed By: Sutton Group-West Coast Realty (Surrey/24)



rennie