

# 51173 Sophie Crescent, Chilliwack

\$1,349,000



Well cared two level 5 Bed 3 Bath with separate entry to the bsmt. Surrounded with stunning beautiful view of the valley and mountains. Situated in a very friendly neighbourhood. Close to Unity Christian School, fall Golf Course, play park for kids. There are just a couple of reasons this home should be on your list. Easy to show.

## KEY INFORMATION

MLS® R2670685

Residential Detached

Chilliwack

5 Bedrooms

3 Bathrooms

2,400 SF

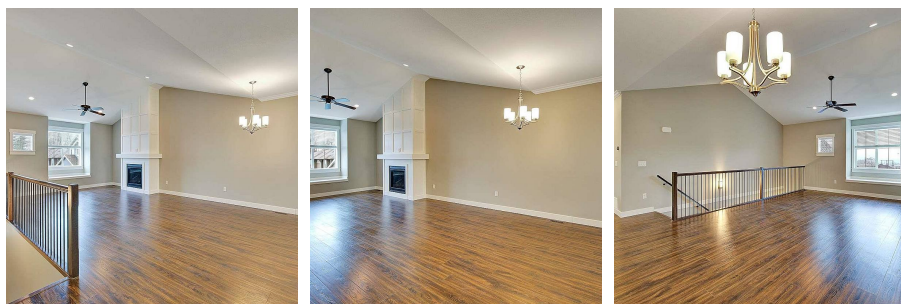
5,712 SF Lot

## FEATURES

Year Built: 2016

Views: MOUNTAIN

Listed By: Coldwell Banker Universe Realty



rennie