

301 33688 King Road, Abbotsford

\$565,000



Wonderful upper end unit in College Park!
Located on the quiet side of the building this 2 bed & 2 bath unit is super bright with southern exposure. Open spacious living room/ kitchen area. Newer flooring throughout the main area. Large laundry room with lots of storage space. Master bedroom with ensuite and walk through closet. Great building with new roof, guest suite and amenities room. Pets allowed (2 cats or 1 dog up to 60 lbs). Comes with 2 parking stalls. Fantastic location just around the corner from the University, Abbotsford Arts & Entertainment Center, restaurants and quick highway access. Call today for a private viewing!

KEY INFORMATION

MLS® R2670654

Residential Attached

Poplar

2 Bedrooms

2 Bathrooms

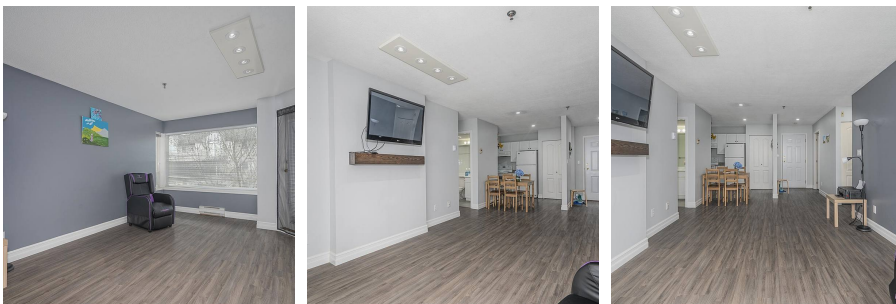
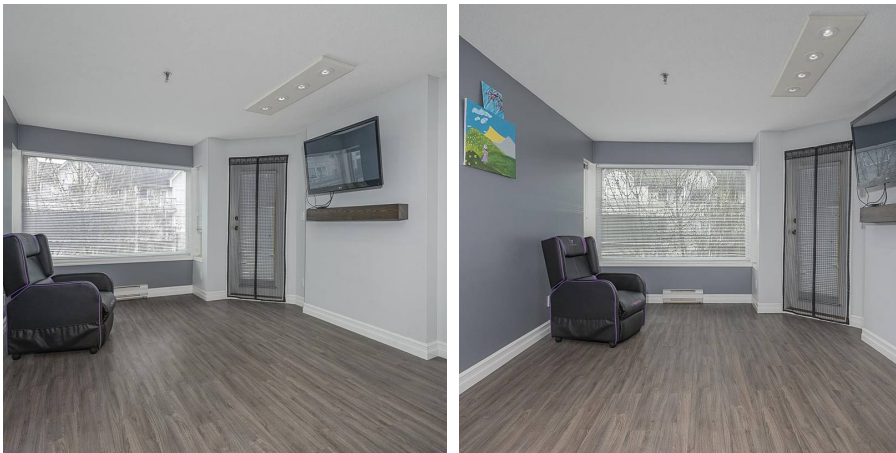
924 SF

\$353.93 Maintenance Fees

FEATURES

Year Built: 1994

Listed By: Vybe Realty



rennie