

6165 Nathan Place, Abbotsford

\$2,599,000



Private 5 Acre property located on a quiet cul de sac. Property is situated only 6 mins from 264 Hwy 1 interchange. The land sits high and has been cleared, ready for your ideas. 4,036 sqft home featuring 4 bedrooms and 1 bathroom on top floor. The main floor features a formal living and family room, den (which is bedroom), bathroom and recently added large rec room with plumbing (suite?). Downstairs features additional storage and a 2 bedroom suite. Over 1200 sq/ft of deck and patio space (mostly covered). You can entertain all year around. Connected to City Water! Natural Gas at the lot line.

KEY INFORMATION

MLS® R2670628

Residential Detached

Bradner

7 Bedrooms

3 Bathrooms

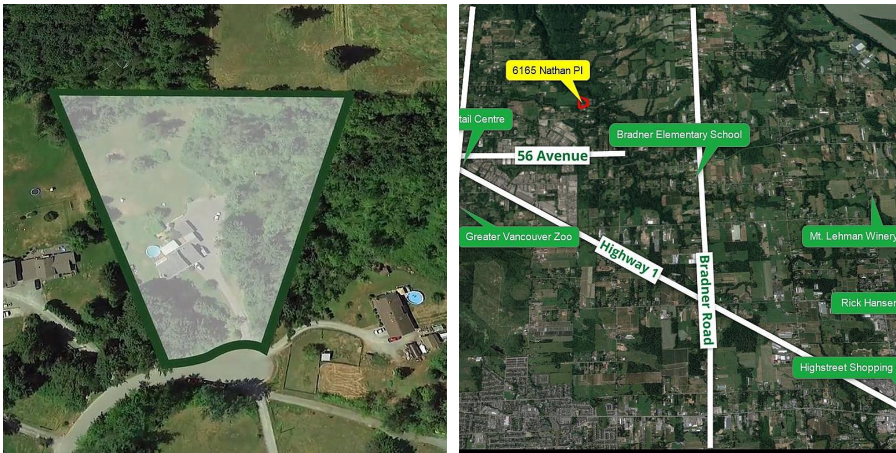
4,036 SF

217,800 SF Lot

FEATURES

Year Built: 1980

Listed By: B.C. Farm & Ranch Realty Corp.



rennie