

413 19945 Brydon Crescent, Langley

\$649,900



A Collection of 77 west coast contemporary designed low-rise apartment units located in Langley City. This unit comes with 2 bedrooms and 2 bathrooms with incredible features, modern touches, inviting living spaces, 2 parking spots (one equipped with EV charging). Kitchen is fully equipped with stainless steel appliances, gas range, quartz countertops and lots of cabinet spaces. Other features include engineered wide plank floors, eco friendly gas clothes dryer and over 1,908 sqft of amenity space with a clubhouse, media room, fitness center, meeting room, & a playground. Property is centrally located and is minutes away from shopping, elementary & high schools, restaurants, Nicomekl Trail, the Dog Park at Linwood Park, Brydon Park, the future Skytrain Station, Bus Stops & much more.

KEY INFORMATION

MLS® R2671096

Residential Attached

Langley City

2 Bedrooms

2 Bathrooms

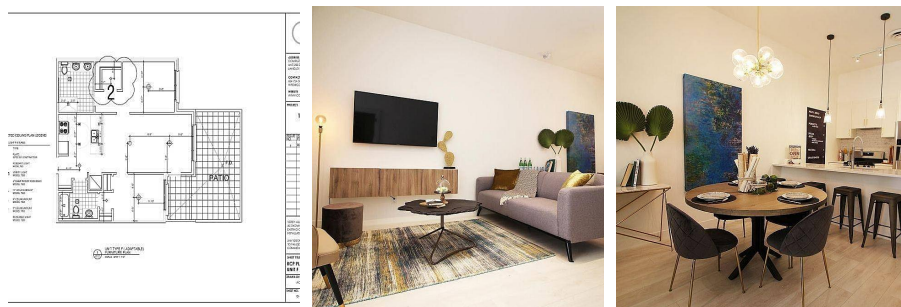
900 SF

\$325.91 Maintenance Fees

FEATURES

Year Built: 2022

Listed By: Royal LePage Sussex Klein Group



rennie