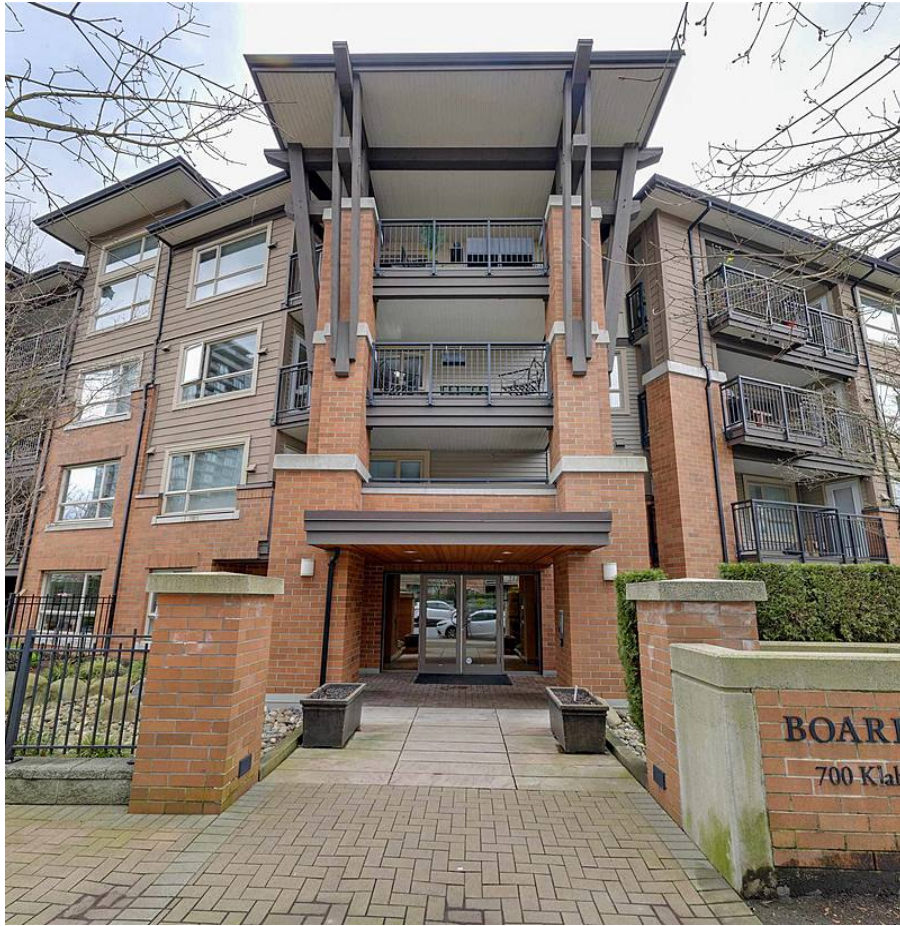


410 700 Klahanie Drive, Port Moody

\$829,000



Luxurious top floor unit at the BOARDWALK on Klahnie near all the walk trails. Very spacious and modern, 2 bedroom unit. S.E facing unit. Features granite countertop, cork flooring, in-suite laundry, stainless steel appliances with gas range, 2 side x side parking, and one of the largest outdoor decks available with a whopping 176Sq.ft. Canoe Club is across the street with access to the outdoor pool, meeting rooms, and tennis courts. Come check it out.

KEY INFORMATION

MLS® R2670839

Residential Attached

Port Moody Centre

2 Bedrooms

2 Bathrooms

881 SF

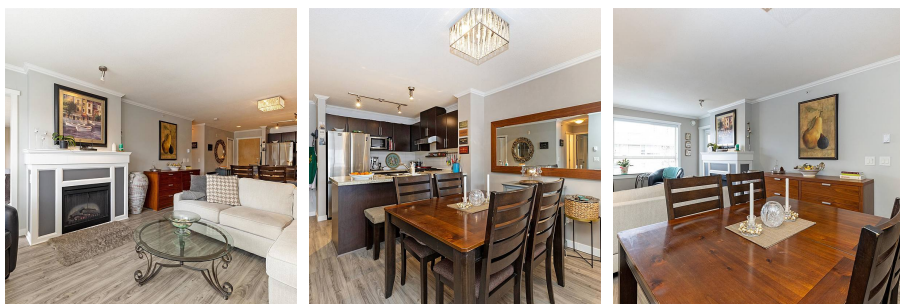
\$418.19 Maintenance Fees

FEATURES

Year Built: 2007

Views: Mountains

Listed By: rennie & associates realty ltd.



Simon Lai PREC*
778.881.3603
slai@rennie.com
rennie.com/simonlai

rennie