

# 3103 13308 Central Avenue, Surrey

\$674,999



Welcome to the 31st Floor with Unobstructed Panoramic City and Mountain Views! This 815 sqft Unit has spacious 2 Bedrooms, and 2 Full Bathrooms. Foyer entry way, lots of closet space. Bright and Modern. Floor to ceiling windows to enjoy the ultimate city views! 98sqft balcony, perfect to soak in the outdoors. Quartz Counter tops, and Stainless Steel Appliances, Built in Microwave, and soft close cabinets. The building offers Concierge, Bike room, Gym/Exercise Centre, Games Room and Clubhouse with Kitchen for your parties. 100% Rentals allowed! Perfect for Investors! Located in the heart of the city, close to Skytrain, Recreation, Shopping, SFU and schools. Currently Tenanted to an amazing couple who would love to stay. Showings by appointment only.

## KEY INFORMATION

MLS® R2670724

Residential Attached

Whalley

2 Bedrooms

2 Bathrooms

815 SF

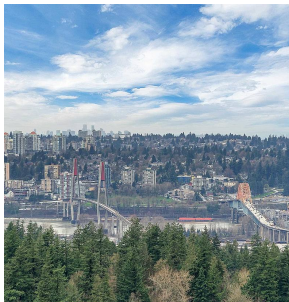
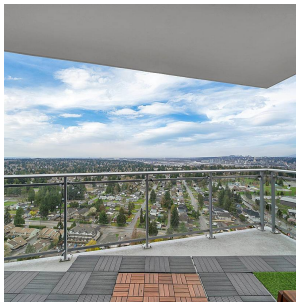
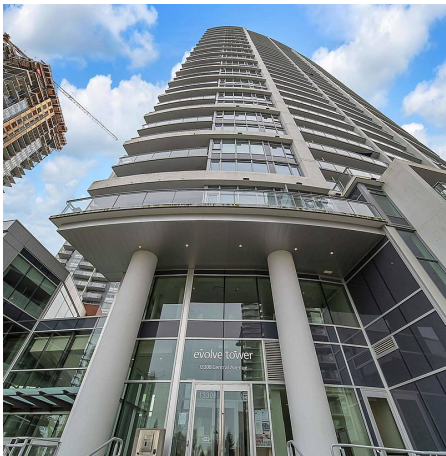
\$526.16 Maintenance Fees

## FEATURES

Year Built: 2018

Views: Panoramic, City and Mountain

Listed By: Sutton Premier Realty



rennie