

11508 McBride Drive, Surrey

\$1,249,000



DON'T MISS THIS ONE!! Private three bedroom home on a wide lot backing onto open space with a recently added two bedroom suite backing onto Wellington Creek Ravine in a park-like setting. A newer metal roof, exterior vinyl siding, windows, and a fence in front and back are among the recent renovations. This charming property is surrounded by magnificent trees and seasonal mountain views and is conveniently located near the sky train, shopping, and Invergarry Park, which has walking and bike trails as well as a major creek running through it. There is ample parking, including RV parking.

KEY INFORMATION

MLS® R2671241

Residential Detached

Bolivar Heights

5 Bedrooms

2 Bathrooms

2,009 SF

11,625 SF Lot

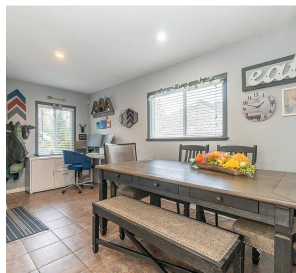


FEATURES

Year Built: 1966

Views: Seasonal

Listed By: Homelife Benchmark Titus Realty



rennie