

4651 Simpson Avenue, Vancouver

\$12,580,000



Located in Point Grey, step away to Locarno Beach, sitting on a 9000(60 x 150) sqft lot. This spectacular home offers 5283 sqft of spacious floor plan with attention to detail throughout. Total of 5 bedrooms and 6 full bath/ 2 half bath. Second floor has three ensuite bedrooms, north facing master bedroom with beautiful mountain, water and city view. Den on the main floor includes a full bath which can be turn into a bedroom. Functional layout, H/W flooring, wok kitchen comes with high end appliances, HRV, A/C. Basement with home theatre, huge recreation room & 2 guest bedrooms. 3 car garage. School catchment: Queen Mary Elementary & Lord Byng Secondary.

KEY INFORMATION

MLS® R2671360

Residential Detached

Point Grey

5 Bedrooms

8 Bathrooms

5,283 SF

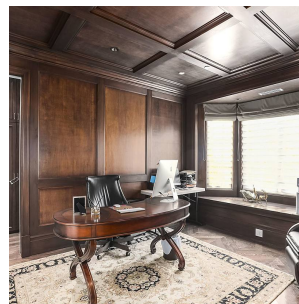
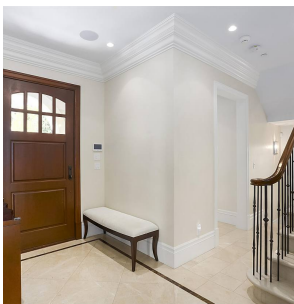
9,000 SF Lot

FEATURES

Year Built: 2014

Views: Moutain,water&city view

Listed By: Luxmore Realty



rennie