

# 4391 Westminster Highway, Richmond

\$1,950,000



Desirable RIVERDALE AREA location! Huge 10,894 SF lot. 5 bedroom, 2 ½ baths with just over 2700 SF of living space. Great floor plan, huge detached double garage. Huge patio (439sf) and an additional wonderful covered patio (148sf) leading to a beautiful sun room with lots of natural light. Home was built in 1987 and the roof tiles used with R40 insulation will last for many, many years. Aluminum fence and electric gates. Retaining wall built with reinforced concrete, 6 inches from property line. Fruit trees in the back garden. Quick drive to Airport, Vancouver and Downtown Richmond. Conveniently located close to bus stops, walking and biking distance to Terra Nova mall and parks, the Oval, dykes, Thompson and Spul'u'kwuks Elementary and Burnett Secondary.

## KEY INFORMATION

MLS® R2671447

Residential Detached

Riverdale

5 Bedrooms

3 Bathrooms

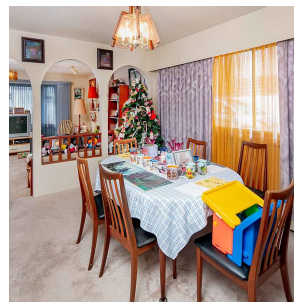
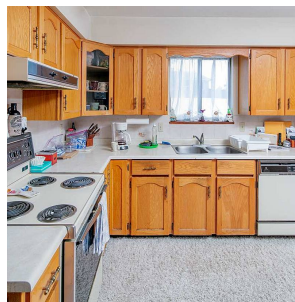
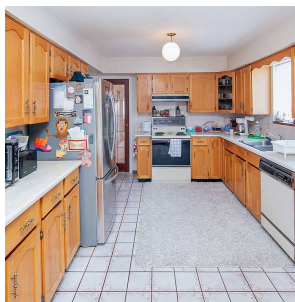
2,706 SF

10,894 SF Lot

## FEATURES

Year Built: 1987

Listed By: RE/MAX Westcoast



rennie