

76 15399 Guildford Drive, Surrey

\$998,000



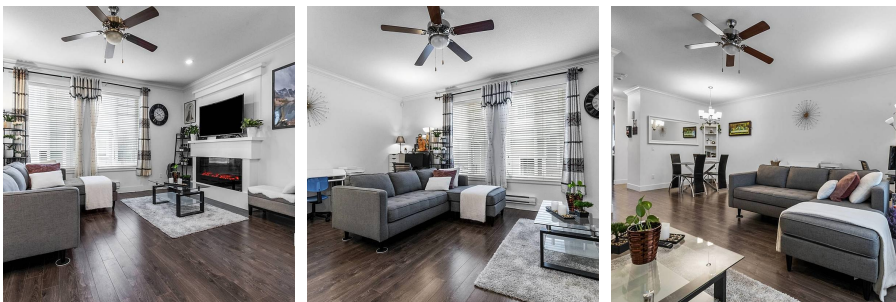
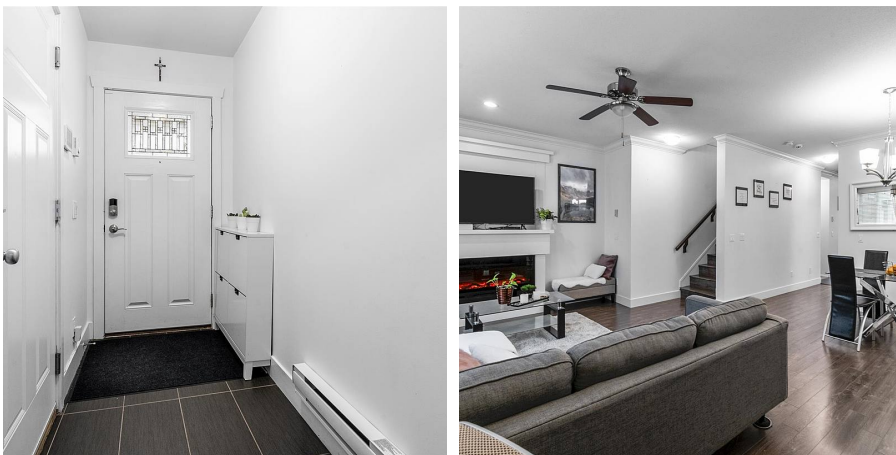
Welcome to this well maintained 4BD & 3Bath Guildford townhome. A functional main floor plan with elegant fire place in living area open and next to sizeable dining area for your family mean enjoyment. Convenient power room is also in place. Bright, eat-in kitchen with stainless steel appliance, rich cabinetry, quartz counter & large island with breakfast bar faces your generous, fully fenced back yard. Naturally well-lit bedrooms on upper level & a private den with half bath below easily converts to suit your needs. Centrally located. Minutes to Guildford Town Centre, restaurants, grocery with easy access to HWY 1.

KEY INFORMATION

MLS® R2671210
Residential Attached
Guildford
4 Bedrooms
4 Bathrooms
1,479 SF

FEATURES

Year Built: 2014
Listed By: Grand Central Realty



rennie